



Your Logo



## Southwater Road, St Leonards on Sea

£175,000

🛏 1 🍳 1 🛋 1



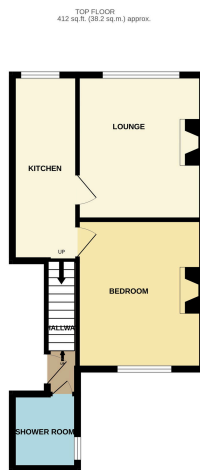
- One Double Bedroom
- Modern Fitted Kitchen
- Fully Tiled Shower Room with Under Floor Heating
- Share of Freehold
- Close to Railway Station
- Close to Seafront and Beach
- Local shops and cafes are within walking distance
- CHAIN FREE





## Stunning CHAIN FREE One-Bedroom Top Floor Flat in the Heart of St Leonards On Sea, East Sussex

This charming top-floor flat offers a fantastic opportunity for those seeking a stylish and low-maintenance home in a prime location. Situated in the popular St Leonards area of East Sussex, the property boasts a spacious double bedroom, a modern fitted kitchen, and a fully tiled shower room with the luxury of underfloor heating. Close to mainline station with links into London and a short stroll away from the beach and local shops, bars and restaurants. Early viewing is highly recommended.



TOP FLOOR ONE BEDROOM FLAT  
TOTAL FLOOR AREA: 432 sq ft, (39.2 sq.m.) approx.  
This energy rating has been calculated by the Energy Rating Agency (ERA) using the information provided in the EPC. It is based on the assumption that the property is a standard type of property and that the energy performance is typical for properties of this type. It does not take into account any energy saving measures that may be in place or any other factors that may affect the energy performance of the property. The energy rating is a guide only and should not be used as a basis for any decision. For more information, please visit the Energy Rating Agency website.

