



## Carpenters Wood Drive, Chorleywood

Guide Price £1,500,000

 4  4  2



Exquisite 4-bedroom detached home in a prime location in Chorleywood

\*\*\* PLEASE QUOTE REF KW0404\*\*\*



## Key Features

- 4 Bedrooms
- Bright and Spacious
- South Facing Garden
- Utility Room
- \*\*\* PLEASE QUOTE REF KW0404\*\*\*
- Detached
- Contemporary Design
- En-Suite Bathrooms
- Ideal Location
- Garage

Approximate Gross Internal Area  
Ground Floor = 144.4 sq m / 1,554 sq ft  
First Floor = 67.4 sq m / 725 sq ft  
Garage = 12.0 sq m / 129 sq ft  
Total = 223.8 sq m / 2,408 sq ft  
(Excluding Void)

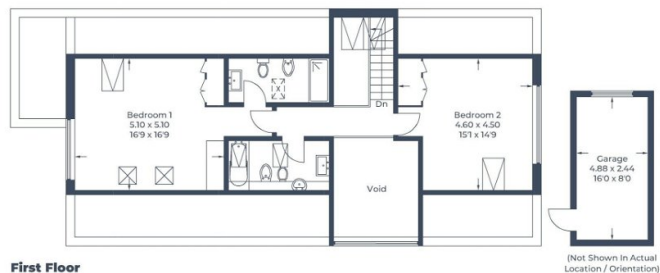


Illustration for identification purposes only,  
measurements are approximate, not to scale.

© CJ Property Marketing Produced for EXP Kate Woodward