



Poulders Road, Sandwich, CT13 0LU

Guide Price £575,000

DOMINIC MURPHY POWERED BY exp TM UK

@ dominic.murphy@exp.uk.com

🌐 dominicmurphy.exp.uk.com

☎ 01304 746 016

Poulders Road, Sandwich, CT13 0LU

Nestled in a peaceful rural setting yet just a 10-minute stroll from the town centre, this almost new (2021) four-bedroom detached bungalow exudes quality and craftsmanship. Built by a reputable local developer, the property offers high-specification finishes and generous living spaces, all backed by a 7-year warranty.

Internally - The home's traditional proportions are complemented by modern amenities, including underfloor heating and private off-road parking. As you step through the welcoming porch, complete with a built-in cloaks cupboard, you're greeted by a long, inviting inner hall. This leads to the heart of the home with doors into both bedroom and living areas, including a stunning open-plan kitchen and dining room, fully fitted with top-quality appliances, perfect for family gatherings and entertaining.

The bungalow features four spacious bedrooms, including a master suite with an en-suite bathroom. Additionally, there is a striking four-piece family bathroom and a generously sized lounge with bi-fold doors that open onto a beautifully landscaped patio area, seamlessly blending indoor and outdoor living.

Garden: - The rear garden is a thoughtfully designed space, featuring extensive terracing and lawned areas, Ideal for entertaining or enjoying al fresco dining, the garden offers ample opportunities to relax and unwind. The front of the property includes a driveway with space for upto three vehicles, ensuring convenience and privacy.

Location - The property is located on the edge of the town centre within only a short walk of the town centre shops and amenities, including the 5* Albion Equine, livery yard. Sandwich has good primary and secondary schools; an excellent supermarket and a comprehensive range of further shops. Sandwich station has regular fast trains to London's St Pancras.



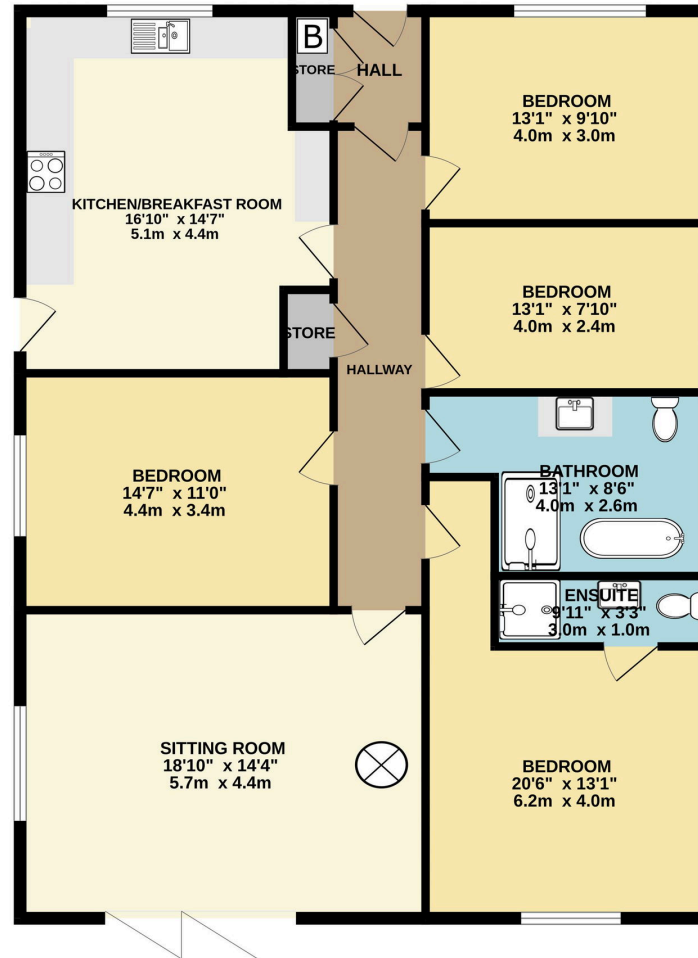








GROUND FLOOR
1346 sq.ft. (125.0 sq.m.) approx.



FOUR BEDROOM DETACHED BUNGALOW

TOTAL FLOOR AREA : 1346 sq.ft. (125.0 sq.m.) approx.

Whilst every attempt has been made to ensure the accuracy of the floorplan contained here, measurements of doors, windows, rooms and any other items are approximate and no responsibility is taken for any error, omission or mis-statement. This plan is for illustrative purposes only and should be used as such by any prospective purchaser. The services, systems and appliances shown have not been tested and no guarantee as to their operability or efficiency can be given.
Made with Metropix ©2024