

## West Street, Bromley

1 1 1

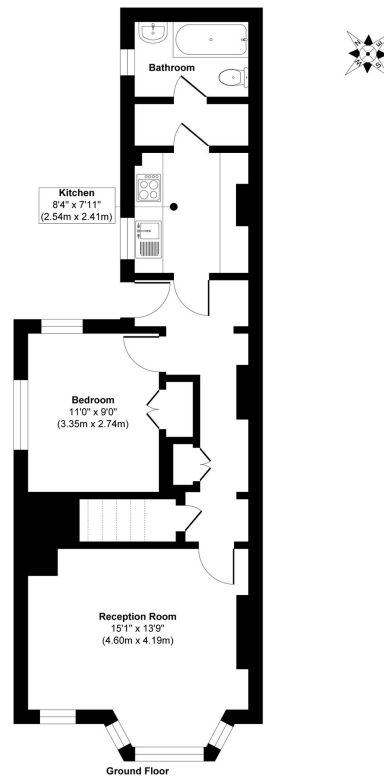


A delightful one-bedroom ground-floor flat in West Street, Bromley, BR1, featuring a spacious reception room, a well-equipped kitchen, outdoor space at the side, a landscaped front garden, and a private parking space. With a share of freehold and a 50% contribution to yearly building insurance (approximately £550), this property offers both charm and practicality. Conveniently located near local amenities and transport links, it's ideal for first-time buyers, downsizers, or investors. Please Quote RF0924 for all Enquires

## Key Features

- Guide Price £290,000 to £310,000
- Please quote RF0924 for all enquires
- One-bedroom ground-floor flat
- Spacious reception room with a large bay window
- Well-equipped kitchen offering functionality and convenience
- Landscaped front garden
- Private parking space for added convenience
- Share of freehold
- 50% contribution to yearly building insurance, approximately £550
- Short walk to Bromley North Train Station, Bromley South Station & Glades Shopping Centre

West Street BR1



Approx. Gross Internal Floor Area 544 sq. ft / 50.50 sq. m  
Illustration for identification purposes only. Measurements are approximate, not to scale.  
Produced by Elements Property