



KATHERINE WAGNER

exp<sup>®</sup> UK

@katherine.wagner@exp.uk.com

🌐katherinewagner@exp.uk.com

📞07795 153 071



## Kiln Close, Ridgewood, Uckfield

Fixed Price £500,000

🛏 3 🚿 1 🛋 3

- REF: KW0865 £500,000
- 3 Bedroom Detached
- Beautifully Presented throughout
- Generous size plot offering a high degree of privacy
- Garage & Driveway with parking for 3 cars
- Lounge & Dining Room
- Modern Kitchen/Breakfast Room
- Energy efficient home with solar panels
- Walking distance to town centre & train station
- Internal viewing highly recommended



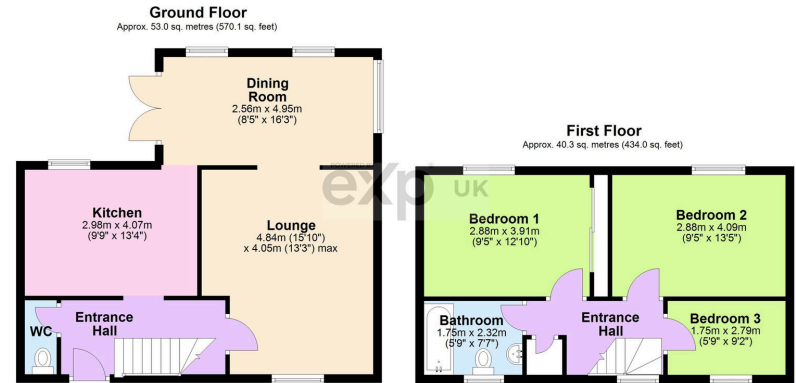
This stunning three bedroom detached family home, has been modernised to create a beautifully presented, low maintenance home. Surrounded by high hedgerows, the property is situated on a generous plot, offering a high degree of privacy.

Boasting a refurbished kitchen/breakfast room, a light and airy separate dining room with double doors to the rear garden, downstairs WC and a lounge. There are three bedrooms and a family bathroom.

Outside, there is a private driveway with parking for 3 cars, garage which currently houses the utilities and ample storage and front and rear gardens.







Total area: approx. 93.3 sq. metres (1004.1 sq. feet)

Dimensions are for illustrative purposes only. No responsibility is accepted for any errors.  
Plan produced using PlanUp.

