

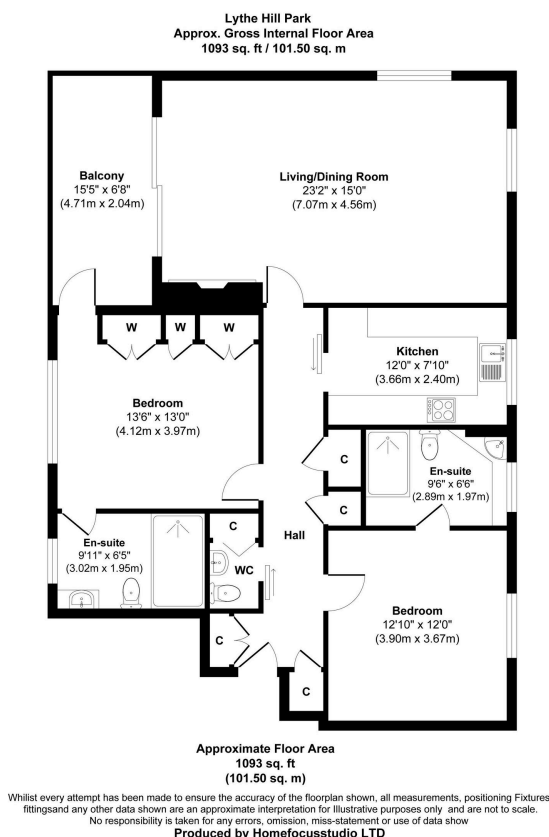
Lythe Hill Park, Haslemere

Guide Price £535,000

2 2 1



- Stunning Communal Grounds & Views
- Lift Access
- Beautifully Presented Property
- Open Plan Living Dining Room
- Modern Fitted Kitchen
- Indoor Swimming Pool, Tennis Courts, Squash Court on-site
- Double Garage & Visitor Parking Bays
- Spacious Double Bedrooms both with en-suites
- Patio Doors to Spacious Terrace
- Close to Haslemere Mainline Station



A spacious and modern two bedroom apartment set in an area of outstanding natural beauty and enjoying over 40 acres of woodland walks and grounds. The property enjoys a private patio with stunning views over grounds and use of superb amenities such as indoor heated swimming pool, tennis courts, pitch and putt course and squash courts.

There is lift access to the apartment as well as a double garage with power and light.

There are two generous bedroom both benefit from ensuite tiled bathrooms and the principal bedroom has views towards the woodlands and direct access onto the private balcony.

Quote AM0249 for viewing appointments.