

Paynes Park, Hitchin, SG5 1EJ

Guide Price £250,000

2 1 1



Exciting Opportunity for Over 60s in the Heart of Hitchin

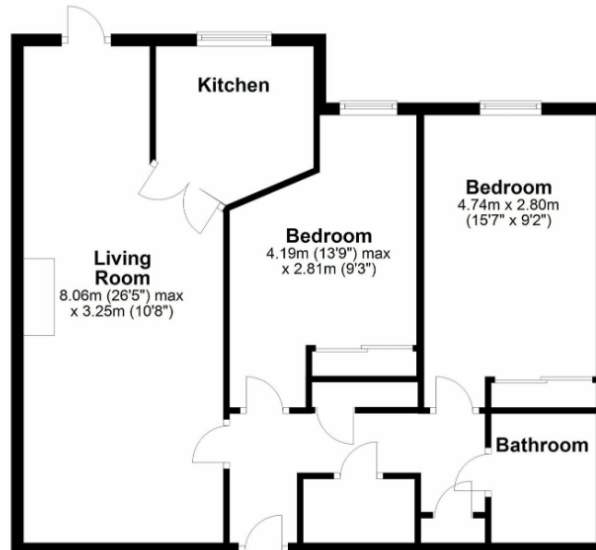
This bright and spacious two-bedroom ground-floor retirement apartment offers an incredible opportunity to enjoy a vibrant yet relaxed lifestyle in the heart of Hitchin town centre. Designed with convenience and comfort in mind, the property boasts two generously sized double bedrooms, a modern and well-appointed kitchen, and a recently refitted shower room. As one of the original show apartments, it features a welcoming and airy atmosphere throughout.

Key Features

- Chain Free
- Ground Floor
- Communal Gardens For Relaxation and socialising
- Resident Amenities, Including a Lounge, Laundry Room, and House Manager For Added Peace Of Mind
- EPC C
- Two Spacious Double Bedrooms
- Prime Town Centre Location
- On-Site Parking Facilities
- Great Rental Potential For retirement-Focused tenants
- Ample Built In Storage

Floor Plan

Approx. 70.3 sq. metres (756.6 sq. feet)



Total area: approx. 70.3 sq. metres (756.6 sq. feet)

All measurements shown are approximate and for guidance only. Garages and workshops are not included in any gross floor areas unless integral to the main building where they will be included.
Plan produced using PlanUp.