



84 Beauxfield, Whitfield

Guide Price £389,995

DOMINIC MURPHY POWERED BY exp TM UK

@ dominic.murphy@exp.uk.com

🌐 dominicmurphy.exp.uk.com

☎ 01304 746 016

84 Beauxfield, Whitfield

An impressive extended detached 3-bedroom bungalow located in the sought-after village of Whitfield, Dover. This property offers a perfect blend of modern style and comfort, presented to a high standard throughout and backing directly onto peaceful playing fields.

Step into the spacious lounge, featuring a charming feature fireplace, creating the perfect setting for relaxation. The lounge has been thoughtfully extended, as has the garage, adding versatility and space to this beautiful home. The large kitchen/breakfast room is a standout feature, boasting an extensive range of matching wall and base units, ideal for both family living and entertaining. Throughout the property, you'll find a seamless mix of high-quality tiled and engineered wood flooring, enhancing its stylish appeal.

Outside, the property benefits from ample off-road parking leading to the extended garage, ensuring convenience for multiple vehicles. The generous rear garden offers tranquil views over the adjoining playing fields, providing the perfect backdrop for outdoor activities or quiet enjoyment.

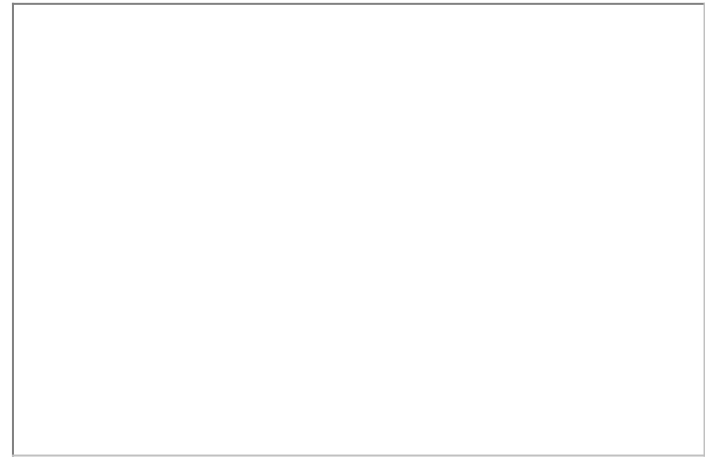
Whitfield is a thriving village conveniently situated at the A2/A256 junction, offering a wealth of amenities, including a pub, doctor's surgery, vets, café, Post Office, takeaways, hairdresser, and a nearby retail park featuring a 24-hour Tesco store. Families will appreciate the excellent local schools, including Whitfield and Aspen School (Primary) and Dover Christ Church Academy, which cater to both mainstream and special educational needs.

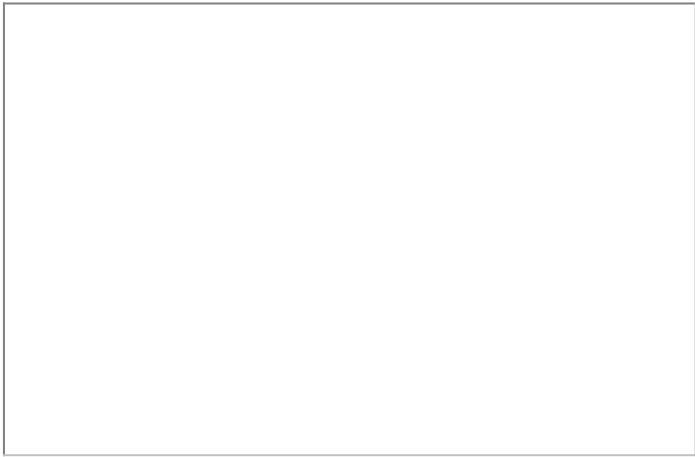
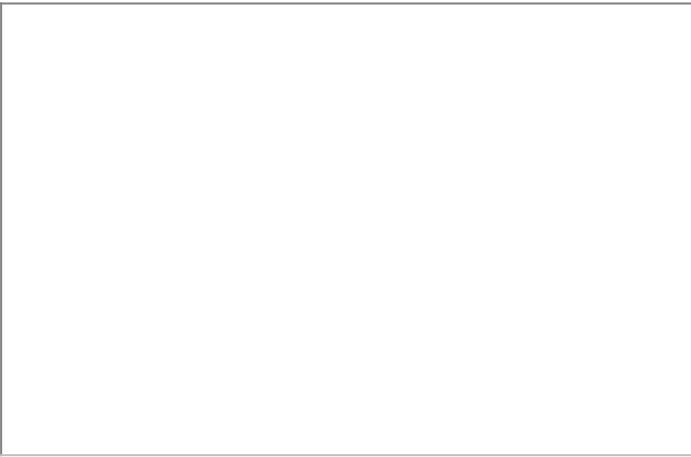
This is an exceptional property in a fantastic location, offering quality living with easy access to local amenities. Viewing is highly recommended to truly appreciate all that this bungalow has to offer.

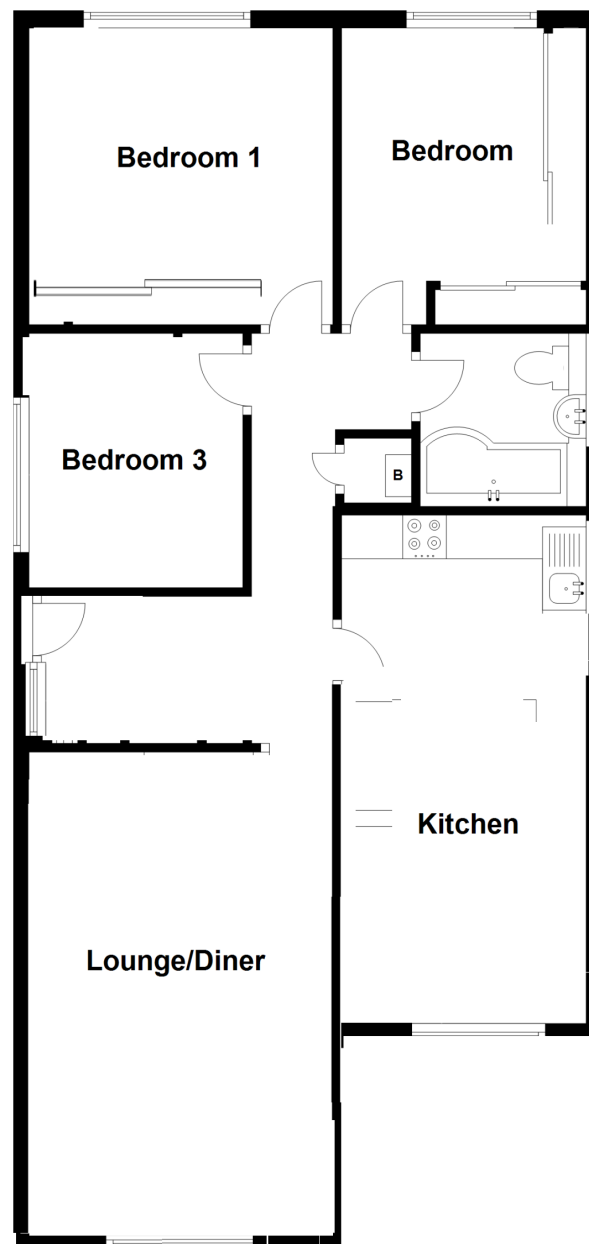












eXp World UK Ltd is a registered company at Level 37, 25 Canada Square, London, E14 5LQ.

Registered company number is 12016573. VAT Registration Number is 327 4120 29