



Red Cottage, Sandown Road

Guide Price £995,000

DOMINIC MURPHY POWERED BY exp TM UK

@ dominic.murphy@exp.uk.com

🌐 dominicmurphy.exp.uk.com

☎ 01304 746 016



## Red Cottage, Sandown Road

Welcome to Red Cottage, a beautifully remodelled 4-bedroom detached home located in the charming town of Sandwich. Recently enhanced with stylish extensions to the front and side, this property has been meticulously improved with exquisite attention to detail, creating a perfect blend of elegance, comfort, and modern living. No Chain

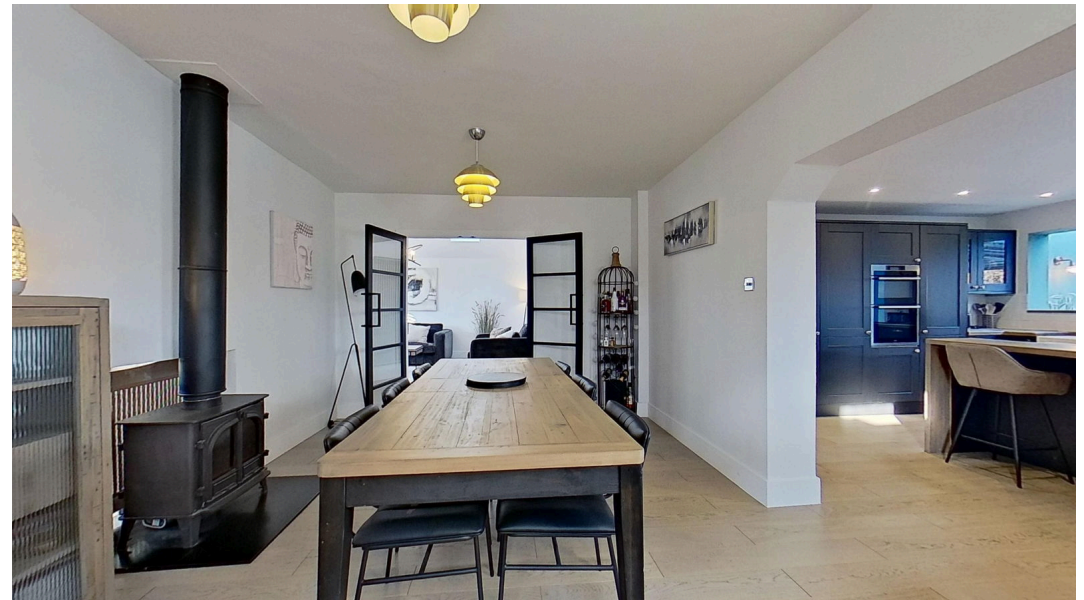
**Step inside** to discover an expansive open-plan layout that flows seamlessly throughout the ground floor. The heart of the home is the stunning dining area, Kitchen and conservatory, providing a cozy yet spacious area for entertaining and family living. There is a downstairs double bedroom at the front, a shower room/wc which is a new addition and the utility plus boot room add practicality to the thoughtful design. Off the dining room with its log burner are French doors into the lounge – with its impressive vaulted ceiling and floor-to-ceiling window—adds a touch of architectural flair.

**Upstairs**, you'll find three beautifully presented double bedrooms. Measuring an impressive 24 x 14 feet, the master bedroom is adorned with matching fitted furniture, a quality en suite, and a Juliet balcony overlooking the garden. Two of the remaining double bedrooms share a spacious walk-in wardrobe, maximizing room space and functionality. The family bathroom is a standout feature, finished to a stunning standard.

**Outside**, the property offers a wealth of possibilities for relaxation and recreation. The rear garden spans over 130 feet and is mainly laid to lawn, with a large patio perfect for entertaining. Steps lead to a hot tub area, creating your own private retreat. A separate games room/gym/office, fully equipped with power, provides additional flexibility to suit your lifestyle. The front garden offers ample parking for numerous vehicles, ensuring convenience for family and guests alike.

**\*On a particular note, planning has been approved for a two storey annexe to the rear**

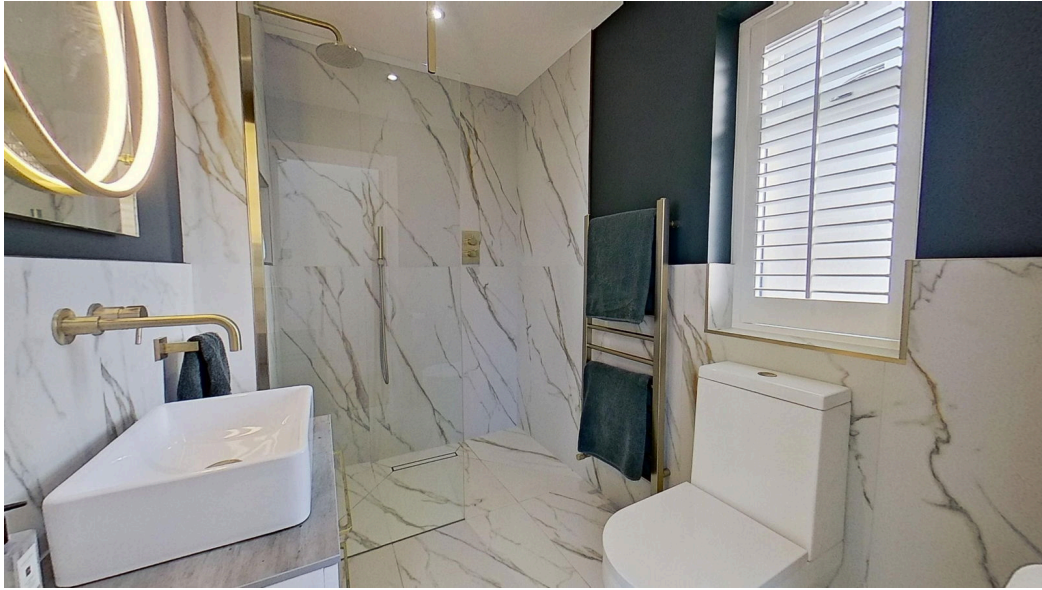
Backing onto peaceful farmland, Red Cottage enjoys a tranquil setting just a stone's throw from the seafront on Sandown Road. The property is a perfect blend of modern living and traditional charm, offering a unique opportunity to own a truly special home.











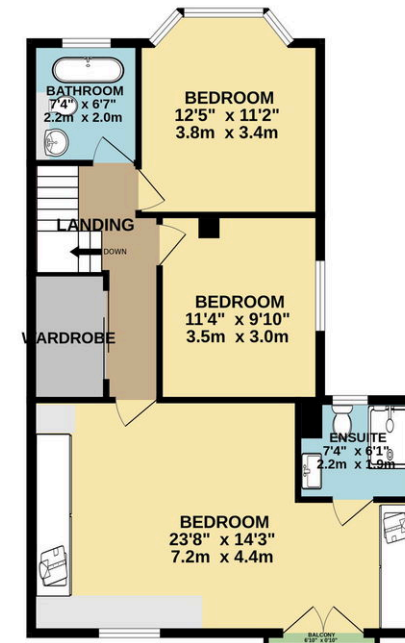
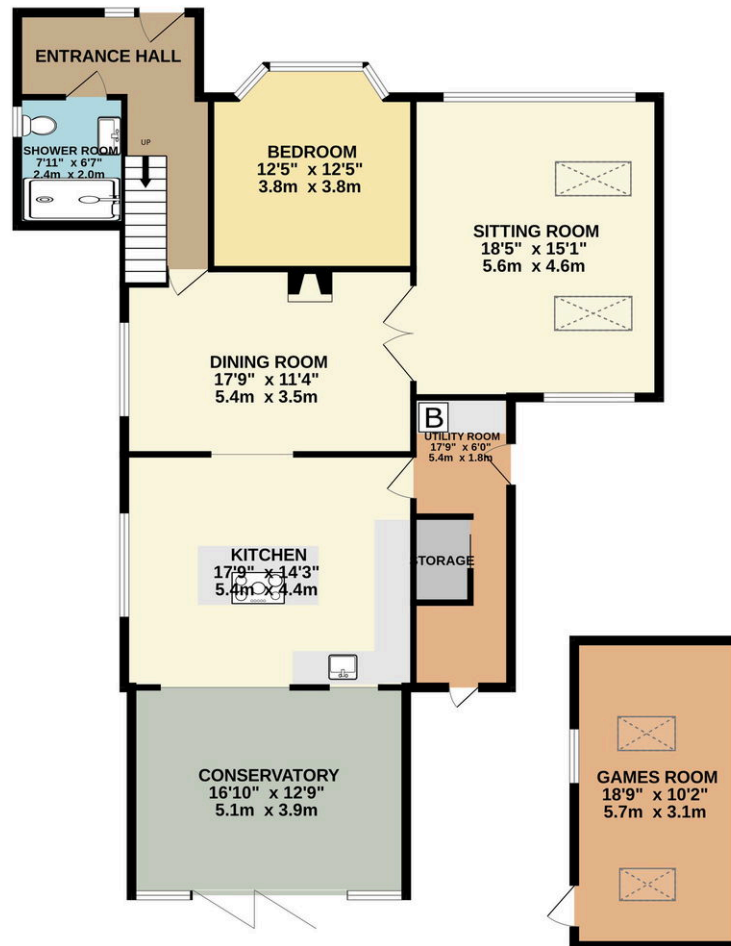






GROUND FLOOR  
1548 sq.ft. (143.8 sq.m.) approx.

1ST FLOOR  
735 sq.ft. (68.2 sq.m.) approx.



TOTAL FLOOR AREA : 2282 sq.ft. (212.0 sq.m.) approx.

Whilst every attempt has been made to ensure the accuracy of the floorplan contained here, measurements of doors, windows, rooms and any other items are approximate and no responsibility is taken for any error, omission or mis-statement. This plan is for illustrative purposes only and should be used as such by any prospective purchaser. The services, systems and appliances shown have not been tested and no guarantee as to their operability or efficiency can be given.  
Made with Metropix ©2025

eXp World UK Ltd is a registered company at Level 37, 25 Canada Square, London, E14 5LQ.  
Registered company number is 12016573. VAT Registration Number is 327 4120 29