

Sheerstone, Iwade, Sittingbourne, ME9 8RL

£270,000

🛏 2 🚿 1 🛋 2



## 🏡 Charming 2-Bedroom Extended Semi-Detached Home 🌿

Tucked away in a quiet no-through road, this delightful home offers a perfect blend of charm and practicality. Boasting two bedrooms, this property also features an extended kitchen and an additional reception room, currently used as a third bedroom—ideal for versatility.

The large westerly-facing garden is a true highlight, perfect for soaking up the sun or entertaining, while the brick-built workshop offers a great space for hobbies or storage.

Set in the historic village of Iwade, dating back to the 13th century, you'll love the quaint local shops and the ever-popular Woolpack pub. For commuters, Kemsley railway station and excellent A249 links to the M2 and M20 ensure easy travel.

✨ Don't miss this opportunity to call this gem home—schedule a viewing today

# PHIL ABRAHART

POWERED BY  
**exp** UK

- Extended 2 bedroom Semi-detached house
- Dining room off the kitchen current being used as a 3rd bedroom
- A useful entrance porch for coats and shoes
- Great outside brick built workshop
- Nice size westerly facing garden great for entertaining
- Lovely size kitchen
- Nice size lounge off the hallway
- Tucked right out of the way
- Does require some redecoration and updating
- Please quote pa1009 when calling in to view or enquire

## 55 Sheerstone

Approximate Gross Internal Floor Area = 91.4 sq m / 984 sq ft

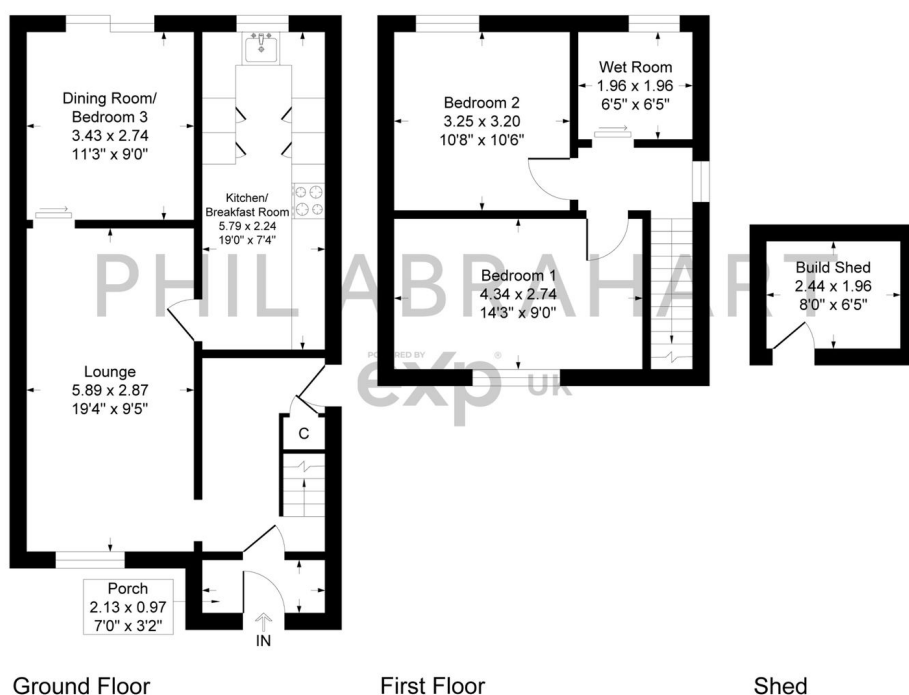


Illustration for identification purposes only, measurements are approximate, not to scale.

07778 703 438

phil.abrahart@exp.uk.com

philabrahart.exp.uk.com



Phil Abrahart is an approved agent of eXp World UK Limited, trading as eXp UK, registered at 5 Churchill Place, 10th Floor, London, United Kingdom, E14 5HU. Company number 12016573. VAT no 327 4120 29. If you have instructed another agent to sell your house and instruct eXp World Ltd to sell your property at the same time, then you could be liable to pay both agents. It is recommended that you check the contract you have with your current agent.