

**11 Thorndon Gardens**

£775,000

4 3 3



Ref: AB0796.

This stunning semi-detached home in the sought after Stoneleigh area features a bright living room, dining room, modern kitchen/breakfast room, sitting room with bi-fold doors, and a ground floor guest bedroom/study with a shower room. Upstairs offers four bedrooms, including a serene principal bedroom, and a family bathroom.


Outside, enjoy a large driveway, a generous rear garden with decking, lawn, and an outbuilding currently used as a gym/home office. Close to Stoneleigh Station, excellent schools, local

ANDREW BURN



@andrew.burn@exp.uk.com

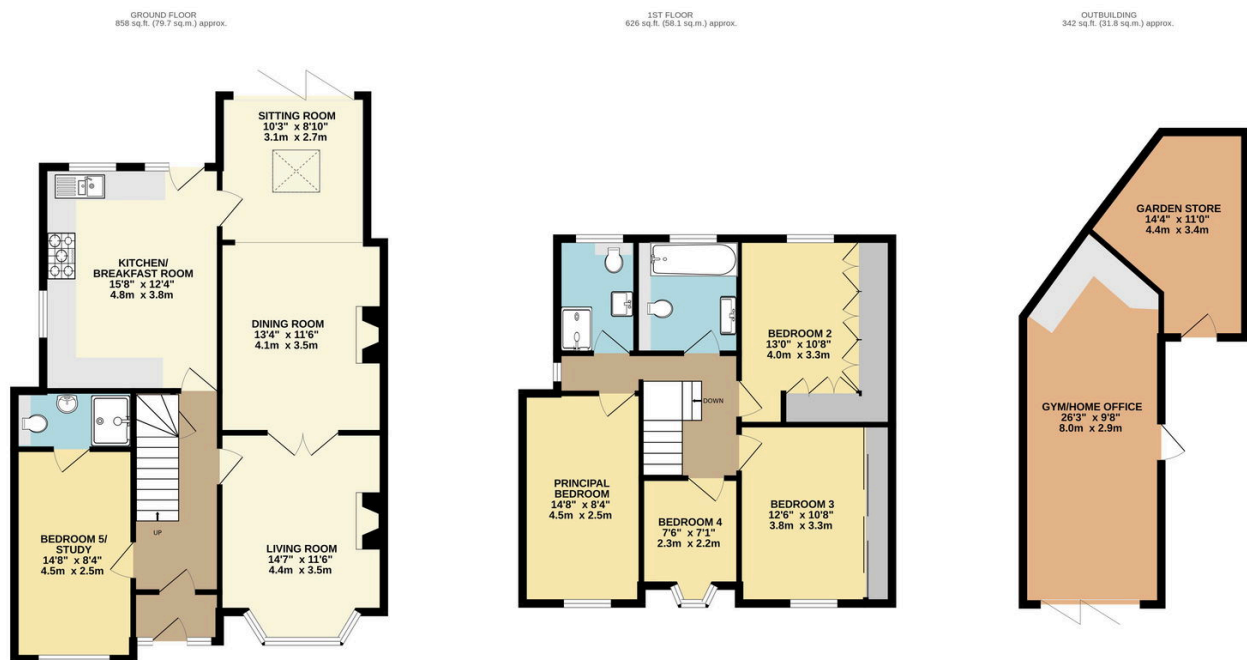
 andrewburn.exp.uk.com

 0203 960 5004

amenities, and Auriol Park, this home offers the perfect balance of space, style, and location. Arrange a viewing today!

## Key Features

- Ref: AB0796
- Modern kitchen/breakfast room
- Family bathroom and separate shower room on the first floor
- Versatile outbuilding with adjacent garden storage
- Excellent schools nearby
- Stunning five bedroom semi-detached home
- Living room, separate dining room and sitting room overlooking the garden
- Generous rear garden with raised decking area
- Block-paved front driveway with parking for multiple vehicles
- Close to Stoneleigh Broadway shops and Nonsuch Park.



OUTBUILDING IS NOT INC. IN TOTAL FLOOR AREA

TOTAL FLOOR AREA : 1484sq.ft. (137.9 sq.m.) approx.

Whilst every attempt has been made to ensure the accuracy of the floorplan contained here, measurements of doors, windows, rooms and any other items are approximate and no responsibility is taken for any error, omission or mis-statement. This plan is for illustrative purposes only and should be used as such by any prospective purchaser. The services, systems and appliances shown have not been tested and no guarantee as to their operability or efficiency can be given.

Made with Metropix ©2025