

## Crown Lane, Bromley, BR2 9PQ

2 1 1



Guide Price £250,000 to £275,000

Please Quote RF0924 for all Enquires.

This spacious two-bedroom apartment offers a fully fitted kitchen with a breakfast bar, a generous living room, and two double bedrooms, one with built-in wardrobes. It also includes a family bathroom, a separate laundry room, and a private shed.


The block features beautifully maintained shared gardens, with a service charge of £1,247, ground rent of £10, and 86 years remaining on the lease. Ideal for comfortable living in a convenient Bromley location.

RAVINA FERMAH



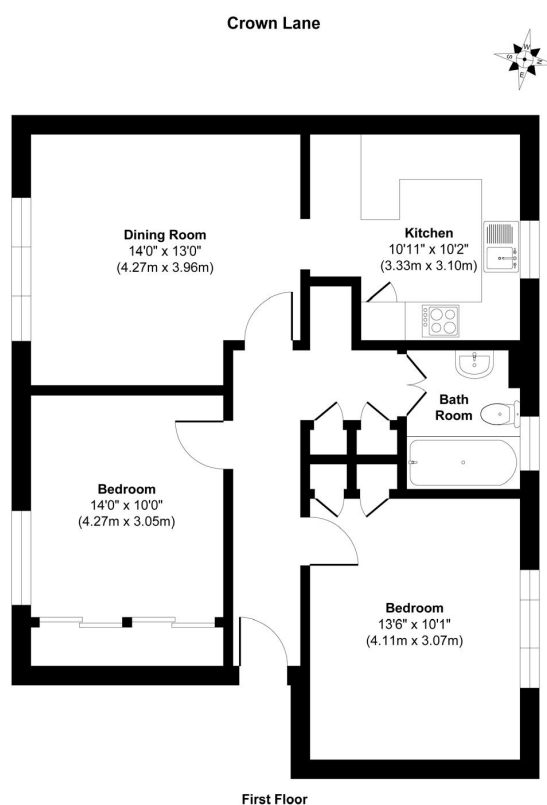
@ravina.fermah@exp.uk.com

 ravinafermah.exp.uk.com

 07432 020 244

## Key Features

- Guide Price £250,000 to £275,000
- Fully fitted kitchen with breakfast bar and Generous living room
- Separate laundry room
- Beautifully maintained shared gardens
- 86 years remaining on Lease
- Spacious two-bedroom apartment and Residents Parking
- Built-in wardrobes in one of the bedrooms
- Private shed
- Annual service charge of £1,247 and ground rent of just £10.
- Please Quote RF0924 for all Enquires



Approx. Gross Internal Floor Area 716 sq. ft / 66.40 sq. m  
Illustration for identification purposes only, measurements are approximate, not to scale.  
Produced by Elements Property