



EMMA STURGESS-LIEF

POWERED BY
exp UK

Property Brochure

Fountain Court, 548 Kingston Road, London, SW20 8DR

Offers Over £625,000

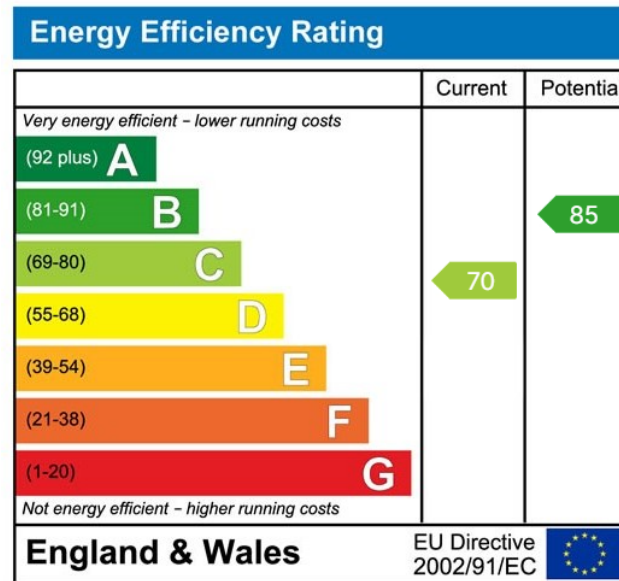
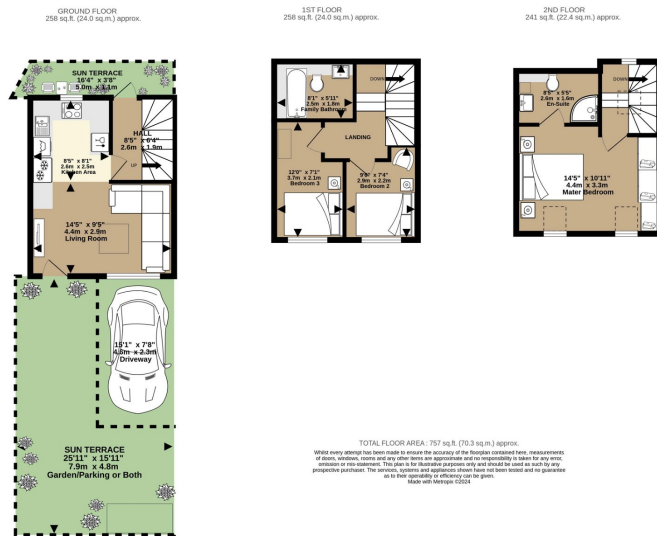
🛏️ 3 🚿 2 🛋️ 1



- Chain-free for a straightforward and speedy purchase.
- Secluded positioning, set back from the road for privacy.
- Contemporary open-plan living and kitchen area, perfect for modern lifestyles.
- Charming sun terrace, a secluded spot for relaxation and enjoying the morning
- Close proximity to amenities, public transport & Wimbledon's vibrant community.
- Versatile front garden with dual functionality as garden, additional parking or both.
- Superb parking options available, based on your needs and choices.
- Three double bedrooms, including a large master suite with ample storage.
- Prime Wimbledon/Rayners Park location, combining convenience with tranquillity.
- Please Quote Ref: ES0957 when booking a viewing.



CHAIN FREE..! Discover urban tranquillity in Wimbledon/ Rayners Park at Fountain Court: a 3-bedroom, 2-bathroom haven with a garden and/or private parking, modern living, and lush tranquillity, all just moments from the city's pulse. CALL TO BOOK YOUR VIEWINGS NOW - Priced for a Quick Sale..! Please Quote Ref: ES0957 when booking a viewing.



Call: 07920 400065
 Email: emma.sturgess-lief@exp.uk.com
 Web: EmmaSturgess-Lief.exp.uk.com

EMMA STURGESS-LIEF
 POWERED BY UK