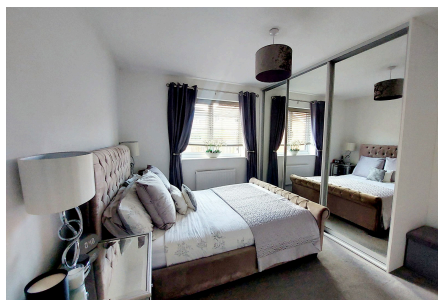
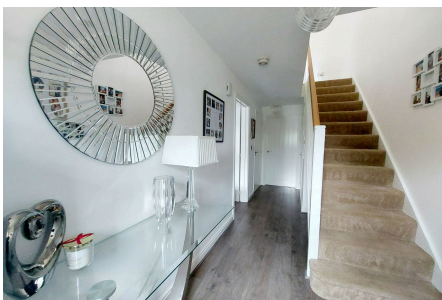


4 Templars Drive

Guide Price £475,000

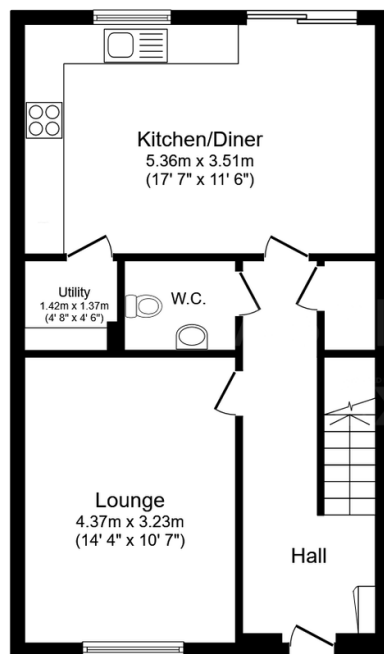
4 2 2



CALL TO BOOK YOUR VIEWING. Guide Price £475,000. If you are looking for a family home ready to move straight into and enjoy then this property could certainly tick the boxes. Offering a spacious entrance hall and living space throughout as well as a detached garage and plenty of off road parking available. The property benefits from an ensuite to the master bedroom and ample cupboard space including a handy utility and downstairs toilet. This home is also being sold with **NO CHAIN** meaning you can be in your new property for Christmas. QUOTE AP0490

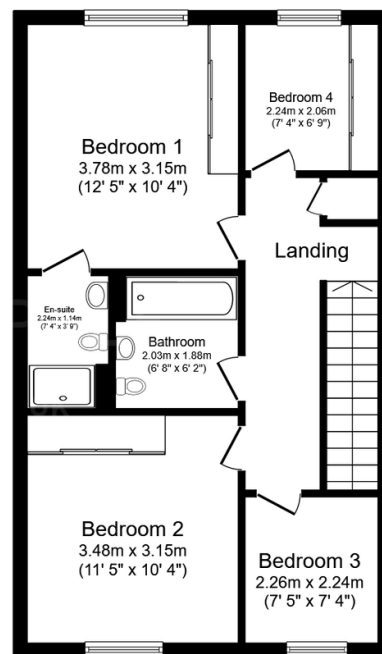
Key Features

- 4 Bedroom Detached House
- Downstairs Cloakroom and Handy Utility
- Ensuite To Master Bedroom
- Easy Access to A2/M2 and Train Station
- Tenure Freehold / Council Tax Band E
- Detached Garage and Driveway
- Fitted Wardrobes In Three Bedrooms
- Modern Kitchen / Diner
- NO CHAIN
- QUOTE AP0490



Ground Floor

Floor area 50.6 m² (545 sq.ft.)



First Floor

Floor area 50.6 m² (545 sq.ft.)

TOTAL: 101.2 m² (1,090 sq.ft.)

This floor plan is for illustrative purposes only. It is not drawn to scale. Any measurements, floor areas (including any total floor area), openings and orientations are approximate. No details are guaranteed, they cannot be relied upon for any purpose and do not form any part of any agreement. No liability is taken for any error, omission or misstatement. A party must rely upon its own inspection(s). Powered by www.Propertybox.io