

Your Logo

109 Livingstone Road

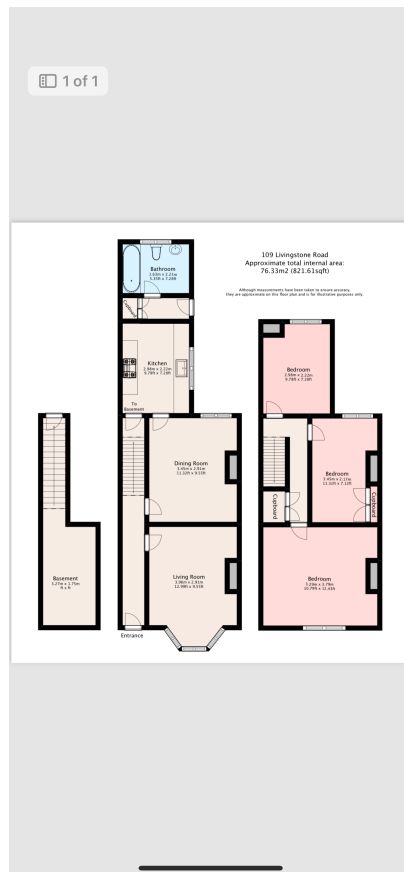
Guide Price £200,000 - £230,000

🛏 3 🚿 1 🚗 2



Your Logo

- 3 BEDROOM TERRACED HOUSE
- CENTRAL LOCATION CLOSE TO SHOPS AND AMENITIES
- EPC RATING - D
- NO FORWARD CHAIN
- PERFECT FIRST TIME BUY OR BUY TO LET INVESTMENT
- GREAT LAYOUT
- CELLAR SPACE
- QUOTE CM1003 TO GET YOUR VIEWING BOOKED!



FROM £200,000 TO £230,000

This 3 bedroom terraced house is offered to the market with NO CHAIN making it a perfect opportunity for FIRST TIME BUYERS & INVESTORS. Requiring some modernising but offering great potential for any buyer.