



JULES MIDDLETON  
exp<sup>uk</sup>  
**FOR SALE**  
07539 429 451  
julesmiddleton.exp.uk.com

JULES MIDDLETON

exp<sup>uk</sup>

@ jules.middleton@exp.uk.com

🌐 julesmiddleton.exp.uk.com

📞 07539 429 451

# Wellswood Close, Hemel Hempstead, HP2 4QN

£675,000

3 1 2

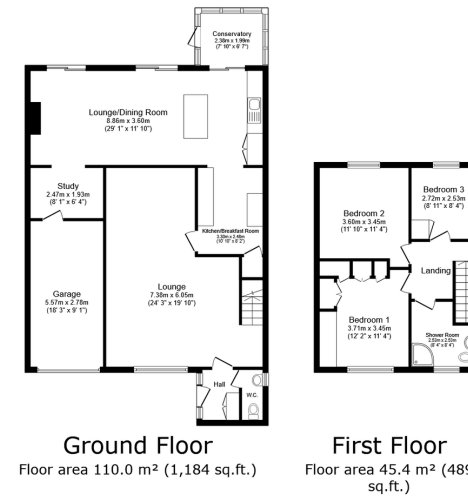


- Extended Three bedroom link-detached house just under 1700sq/ft.
- Welcoming entrance hall with a guest cloak room.
- Conservatory
- Garage
- End of chain
- Open plan downstairs kitchen/diner/lounge.
- Ground floor study/office
- South facing beautifully established garden
- Off street parking
- Please quote JM0792 when enquiring





Exceptionally spacious and extended three bedroom detached family home located in a quiet cul-de-sac.



TOTAL: 155.5 m<sup>2</sup> (1,673 sq.ft.)

This floor plan is for illustrative purposes only. It is not drawn to scale. Any measurements, floor areas (including any total floor area), openings and orientations are approximate. No details are guaranteed, they cannot be relied upon for any purpose and do not form any part of any agreement. No liability is taken for any error, omission or misstatement. A party must rely upon its own inspection(s). Powered by www.Propertybox.io

