



STEWART CRACKNELL

POWERED BY  
**exp**™ UK

Rudgwick, Horsham, West Sussex  
Offers Over £800,000

3 2 5



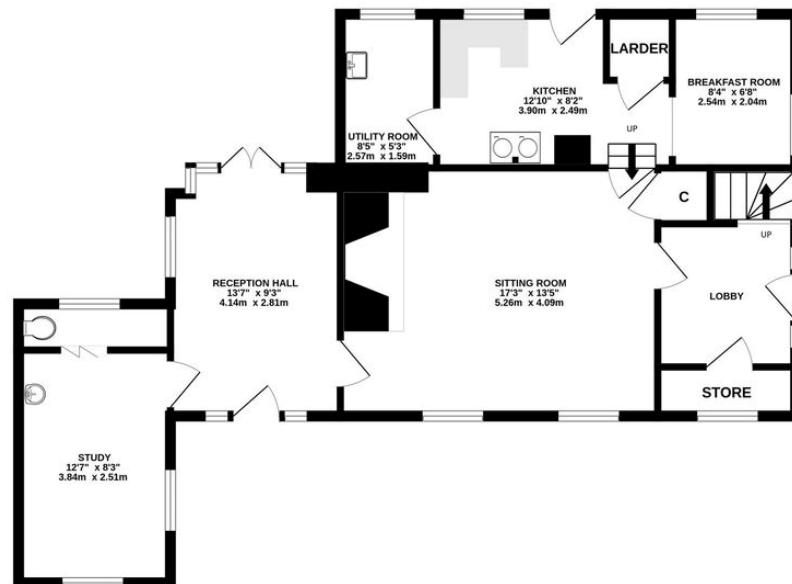
- VILLAGE SETTING ½ MILE FROM SHOPS
- ABUNDANT ORIGINAL CHARACTER FEATURES
- GROUND FLOOR 'STUDY' WITH WC FACILITIES
- STUNNING INGLENOK FIREPLACE
- MASTER WITH EN-SUITE & WALK IN WARDROBE
- MAGNIFICENT FRONT & REAR GARDENS
- ADAPTABLE FLOOR PLAN ARRANGEMENT
- SEPARATE SITTING & DINING ROOMS
- REAR ASPECT KITCHEN / BREKFAST / UTILITY
- TWO FURTHER DOUBLES SERVED BY FAMILY BATHROOM



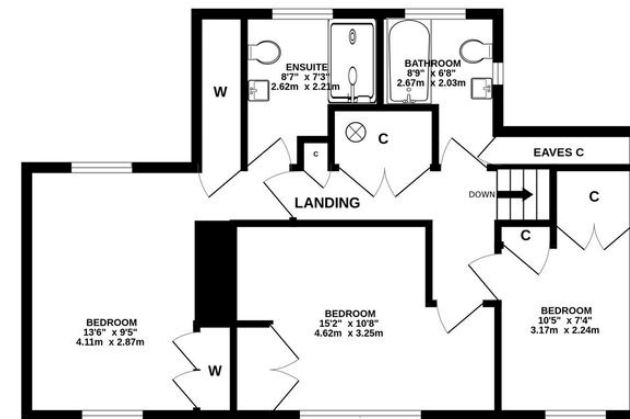
A superb period property with character features. Accommodation is adaptable; particularly the ground floor with various rooms arranged around the center-piece Inglenook Fireplace. Expansive gardens taper to the ancient woodland backdrop beyond the boundary.

Ref: SC0340

GROUND FLOOR  
750 sq.ft. (69.7 sq.m.) approx.



1ST FLOOR  
583 sq.ft. (54.2 sq.m.) approx.



TOTAL FLOOR AREA : 1333 sq.ft. (123.9 sq.m.) approx.

Whilst every attempt has been made to ensure the accuracy of the floorplan contained here, measurements of doors, windows, rooms and any other items are approximate and no responsibility is taken for any error, omission or mis-statement. This plan is for illustrative purposes only and should be used as such by any prospective purchaser. The services, systems and appliances shown have not been tested and no guarantee as to their operability or efficiency can be given.  
Made with Metropix ©2024

Stewart Cracknell is an approved agent of eXp World UK Limited, trading as eXp UK, registered at c/o Corporation Service Company (UK) Limited, 5 Churchill Place, 10<sup>th</sup> Floor, London, E14 5HU

Company Number 12016573. VAT no 327 4120 29.

If you have instructed another agent to sell your house and instruct eXp World Ltd to sell your property at the same time, then you could be liable to pay both agents.

It is recommended that you check the contract you have with your current agent.