

'Ridgeway' Green Lane, Boughton Monchelsea, Maidstone, ME17 4JQ

Guide Price £500,000 - £550,000

4 2 2



CALL TO BOOK YOUR VIEWING! GUIDE £500,000 - £550,000. Pick up your keys and move straight in to this beautiful family home in the popular village of Boughton Monchelsea. This extended semi detached property gives the whole family plenty of space throughout with open plan living overlooking the pretty rear garden perfect for entertaining. The whole property has been decorated to a high standard and has the added bonus of a modern outbuilding perfect for a home office or studio. This home certainly ticks a lot of boxes and will suit a variety of buyers. QUOTE REF AP0490

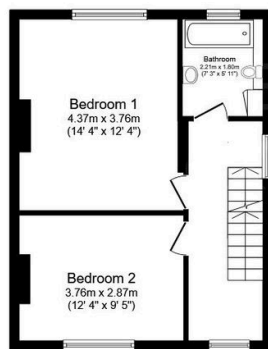
Key Features

- Extended 4 Bedroom Semi-Detached Home
- Stunning Open Plan Kitchen/Living Area
- High Quality Outbuilding Perfect For An Office
- Village Location With Good Links To M20 Motorway
- Tenure Freehold / Council Tax Band D
- Driveway For Several Vehicles
- Surrounded By Countryside Views
- Separate Bathroom & Shower Room
- Ideal Family Home
- QUOTE REF AP0490



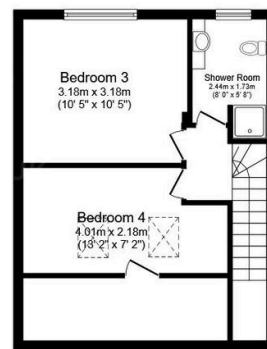
Ground Floor

Floor area 64.1 m² (690 sq.ft.)



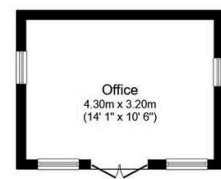
First Floor

Floor area 40.8 m² (439 sq.ft.)



Second Floor

Floor area 34.1 m² (367 sq.ft.)



Outbuilding

Floor area 13.8 m² (148 sq.ft.)

TOTAL: 152.8 m² (1,645 sq.ft.)

This floor plan is for illustrative purposes only. It is not drawn to scale. Any measurements, floor areas (including any total floor area), openings and orientations are approximate. No details are guaranteed, they cannot be relied upon for any purpose and do not form any part of any agreement. No liability is taken for any error, omission or misstatement. A party must rely upon its own inspection(s). Powered by www.Propertybox.io