



LINDSAY McRAE

exp[®] UK

@ lindsay.mcrae@exp.uk.com

🌐 lindsaymcrae.exp.uk.com

☎ 07971 796 225

Macklers Farm, Leverstock Green Road

Guide Price £725,000

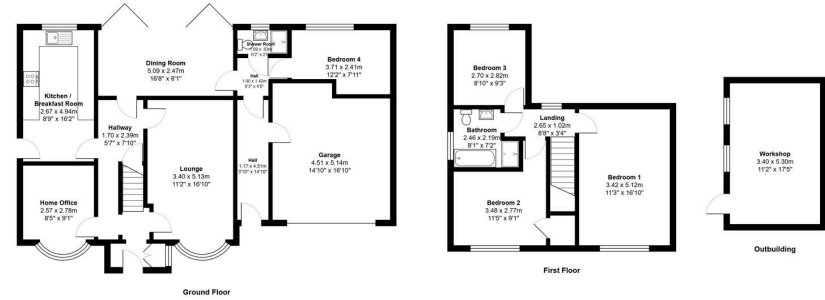
🛏️ 4 🚿 2 🛋️ 2

- Ref: BM:0526
- REFURBISHED 4 BEDROOM DETACHED FARMHOUSE
- REFITTED 16ft KITCHEN with Hacker kitchen & NEFF appliances
- REWIRED, & REPLUMBED THROUGHOUT
- Stunning 4 PIECE Bathroom Suite
- 16ft LOUNGE, 16ft DINING ROOM & 16ft BEDROOM ONE
- BEDROOM 4 & adjacent SHOWER ROOM on GROUND FLOOR
- HOME OFFICE or PLAYROOM
- GAS FIRED HEATING TO RADIATORS
- Previous Planning Permission for SECOND DWELLING



Ref: BM:0526. A UNIQUE ONE of a KIND PROPERTY! A beautifully REFURBISHED 4 BEDROOM DETACHED home located alongside one of old Hemel Hempstead's old thoroughfares in ever popular ADEYFIELD, located on one of Hemel Hempstead's suburbs convenient for nearby Leverstock Green VILLAGE & the Town Centre. This refurbished home features a modern 16ft KITCHEN by Hacker with fitted NEFF appliances. modern 4 piece Bathroom & Shower Room. The ideal spot for COMMUTERS requiring access into London, with an easy 10 minute drive to Hemel Hempstead TRAIN STATION (28 mins into London EUSTON). Perfectly located for easy access to local schools such as Hobletts Manor Junior School around the corner this home is also convenient for senior schools in both Hemel Hempstead & nearby St Albans, whilst the A414 allows easy access to nearby motorways such as the M1 & M25, plus nearby airports such as Luton & Heathrow.





Total Area: 176.0 m² ... 1894 ft²
 All measurements are approximate and for display purposes only

