



LEE QUIGLEY POWERED BY **exp** TM UK

@ lee.quigley@exp.uk.com

leequigley.exp.uk.com

07787 445 950

Jasmine Close, Littlehampton, West Sussex, BN17

£475,000

🛏️ 5 🚿 2 🚻 3



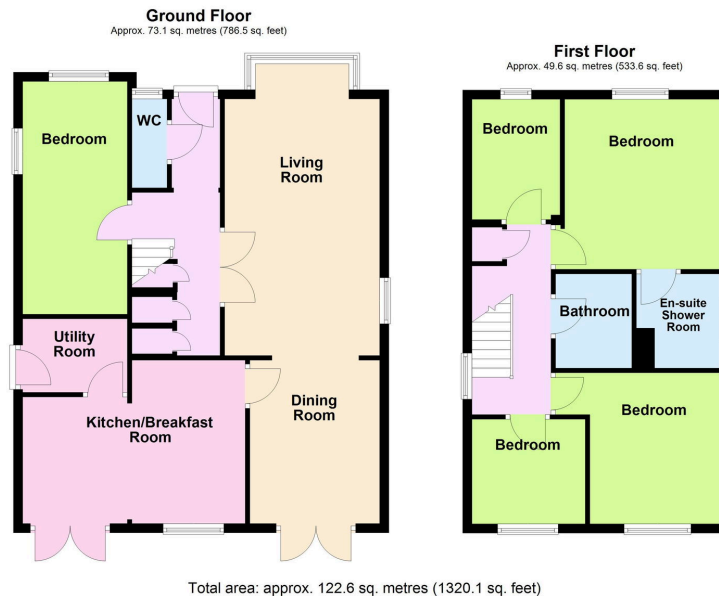
- Detached House
- Four/Five Bedrooms
- Three/Four Reception Rooms
- Bright Rear Garden
- Beautifully Presented
- Utility Room
- Two Bathrooms - Three W/ C's
- **Please Quote REF:LQ0290**
- Annex Potential
- Council Tax - F/EPC - C



We are delighted to bring to market this fantastic sized four/five bedroom detached family home situated on Littlehampton/ Rustington Boarder. On sought after Marlborough Place, within walking distance to Rustington Village this large home is situated at the end of a cul de sac in a very quiet location. Local transport links a short walk away also.

Benefits include off road parking for two cars, large South aspect lounge, Kitchen breakfast room, separate utility room and a beautifully designed rear garden. The flow of the property is second to none and feels bright & airy throughout.

Further features are this property is in very good decorative order throughout, large rooms & in a great and quiet location.



Score	Energy rating	Current	Potential
92+	A		
81-91	B		85 B
69-80	C	70 C	
55-68	D		
39-54	E		
21-38	F		
1-20	G		