



## King Edward VII Apartments, Midhurst, West Sussex

Guide Price £280,000

1 1

A stylish and elegant one bedroom apartment offered with no onward chain, which will appeal to a variety of buyers. Superbly located in the main building this apartment is close to the main entrance with concierge service and direct lift access to the apartment's front door.

With a stylish fitted kitchen featuring premium Siemens integrated appliances, stone worktops and space for a breakfast bar stool area. There is an adjacent bright and airy utility area.

The Living area is spacious with seating and dining areas, there are pretty garden views through the lead light windows, warm toned wood flooring and Edwardian style radiators.

The Bedroom has superb fitted double depth wardrobes and garden views.

The tiled bathroom features a Hasgrohe rainfall shower, large vanity mirror, heated towel rail and shaver points.

The apartment benefits from an extra wide parking space in the underground secure car park.

AM0249

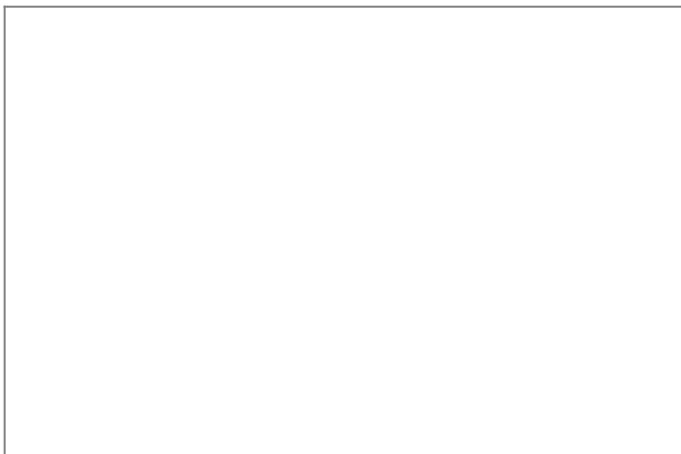
**Floor Area**  
sq. ft.

**Tenure**  
Leasehold

**Service Charge**  
£3200 per annum

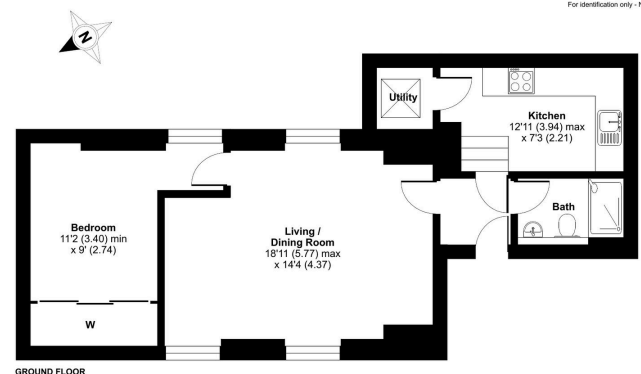
**Ground Rent**  
£150 per annum

- Central location in main prestigious building of King Edward VII Estate
- Use of indoor swimming pool, steam room, gym and nearby guest suite for family & friends
- Extra wide secure underground parking space
- Close to Haslemere mainline railway station, Midhurst, Cowdray Park & Petworth
- Adjacent utility area next to kitchen
- Peaceful location with dual aspect views from the Living Room to the tree filled gardens
- New bespoke fitted double depth wardrobes
- Cost efficient energy bills
- Superb fitted kitchen with excellent storage & integrated Siemens appliances
- Located in 165 acres of beautiful communal Edwardian gardens with access to woodland walks



King Edward VII Apartments, Kings Drive, Midhurst, GU29

Approximate Area = 597 sq ft / 55.5 sq m  
For identification only - Not to scale



 **Certified Property Measurement**  
This plan produced in accordance with RICS Property Measurement Standards incorporating International Property Measurement Standards (IPMS Residential). ©alisonmccarey 2023.  
Produced for Alison McCarey Ltd powered by exp. REF: 1005423