

Quixote Crescent, Rochester, ME2 3XB

Guide Price £325,000-£350,000

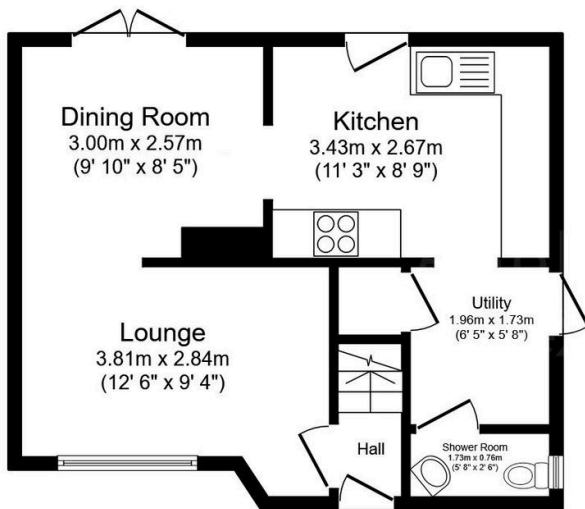
3 1 2



Set on a favorable corner plot this semi detached property would make the ideal family home. With good amounts of living space with handy extras like the utility room and cloakroom there's enough space for everyone! Other features include a sizable garden with an outbuilding in addition to a great sized driveway. All located in a sought after area that offers easy access to the town centre, local schools and motorway links! Call to book your viewing. QUOTE REF AP0490

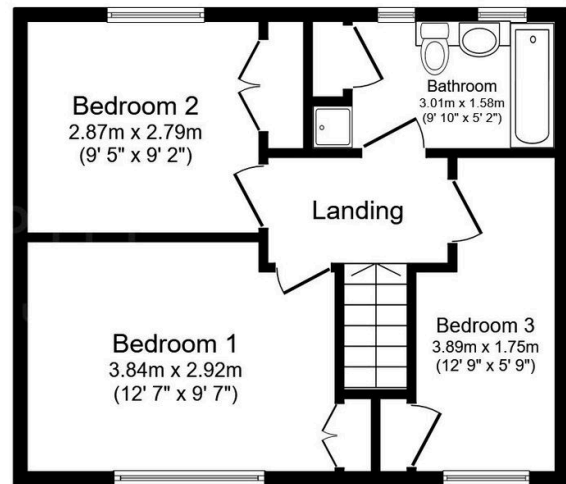
Key Features

- 3 Bedroom Semi-Detached Home
- Utility Room & Cloakroom
- Near to Schools and Town Centre
- Ideal Family Home
- Tenure Freehold / Council Tax Band C
- Modern Decoration Throughout
- Corner plot position
- Driveway
- Near To Mororway Links
- QUOTE REF AP0490



Ground Floor

Floor area 34.9 sq.m. (376 sq.ft.)



First Floor

Floor area 36.3 sq.m. (391 sq.ft.)

TOTAL: 71.2 sq.m. (767 sq.ft.)

This floor plan is for illustrative purposes only. It is not drawn to scale. Any measurements, floor areas (including any total floor area), openings and orientations are approximate. No details are guaranteed, they cannot be relied upon for any purpose and do not form any part of any agreement. No liability is taken for any error, omission or misstatement. A party must rely upon its own inspection(s). Powered by www.Propertybox.io