



STEWART CRACKNELL

POWERED BY
exp™ UK

Bedford Square, Brighton

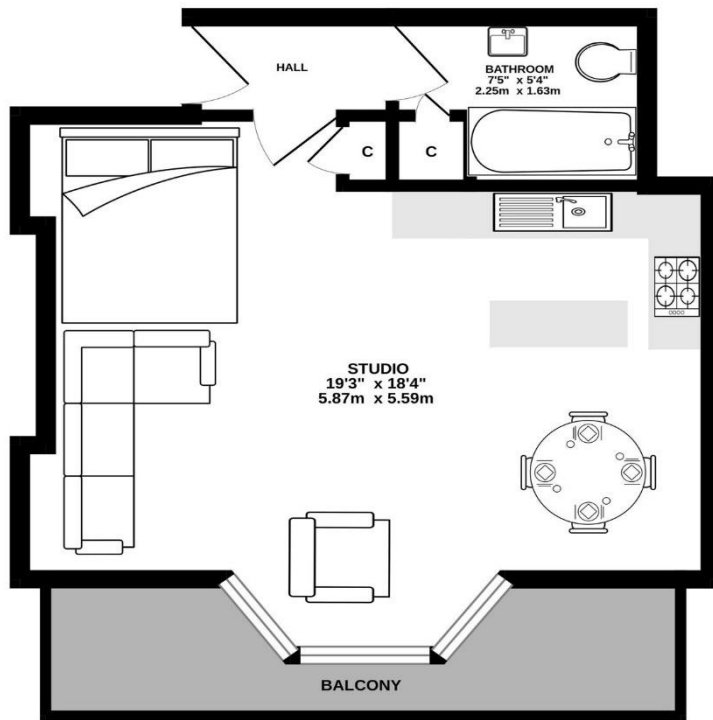
£230,000

1 1 0





FIRST FLOOR
347 sq.ft. (32.2 sq.m.) approx.



TOTAL FLOOR AREA : 347 sq.ft. (32.2 sq.m.) approx.
Whilst every attempt has been made to ensure the accuracy of the floorplan contained herein, measurements of doors, windows, rooms and any other items are approximate and no responsibility is taken for any error, omission or mis-statement. This plan is for illustrative purposes only and should be used as such by any prospective purchaser. The services, systems and appliances shown have not been tested and no guarantee as to their operability or efficiency can be given.
Made with Metropix ©2024

This space, maximises the area in an efficient way. Acquire a flat in a heritage development, believed to be the first square with gated gardens, in Brighton in 1807. A west facing balcony provides a vantage point towards the sea beyond the historic Bandstand.

Ref: SC0340

Score	Energy rating	Current	Potential
92+	A		
81-91	B		83 B
69-80	C		
55-68	D		
39-54	E	53 E	
21-38	F		
1-20	G		

Stewart Cracknell is an approved agent of eXp World UK Limited, trading as eXp UK, registered at c/o Corporation Service Company (Uk) Limited, 5 Churchill Place, 10th Floor, London, E14 5HU
Company Number 12016573. VAT no 327 4120 29.

If you have instructed another agent to sell your house and instruct eXp World Ltd to sell your property at the same time, then you could be liable to pay both agents.

It is recommended that you check the contract you have with your current agent.