



8, Church Farm Mews The Street, East Langdon

Guide Price £410,000

DOMINIC MURPHY POWERED BY exp TM UK

@ dominic.murphy@exp.uk.com

🌐 dominicmurphy.exp.uk.com

☎ 01304 746 016

8, Church Farm Mews The Street, East Langdon

This deceptively spacious mews house, forms part of an exclusive barn style courtyard developed in 2008 and is situated in the sought after and pretty historic village of East Langdon and was designed and built to sympathetically blend in with neighbouring period properties. The development boasts character in abundance and will surely attract a variety of purchasers. **Please quote reference DM0223**

Internally - The accommodation to the ground floor comprises entrance hall, downstairs Cloakroom, Quality fitted Kitchen, generous size lounge/diner with French doors overlooking the garden. the property also boasts wooden floor and a log burning stove for maximum family comfort. The first floor has two bedrooms both benefitting from en-suite facilities and built in wardrobes the master having a walk-in wardrobe too. There is a further staircase to the second floor leading to the third bedroom and storage room. The bedroom boasts an en-suite bathroom.

Outside - The landscaped sunny rear garden is ideal for entertaining friends & Family, this idyllic location has a communal pond with ducks and wildlife in abundance. Further benefits include oak framed car port and additional parking bay at the side of the house along with parking for guests.

The Garden Office is fully loaded and adds greatly to the property by creating extra space, could serve a number of uses, particularly for anyone working from home.







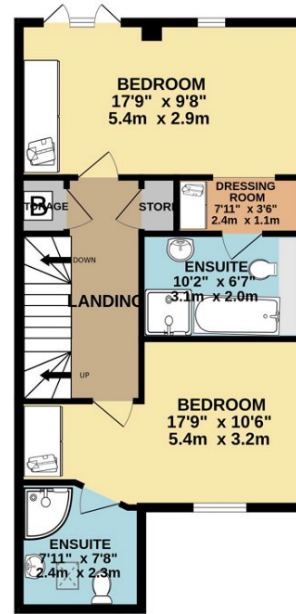




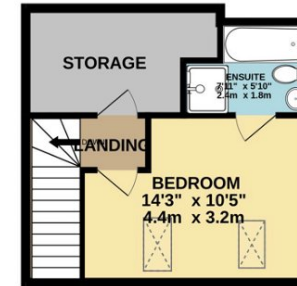
GROUND FLOOR
733 sq.ft. (68.1 sq.m.) approx.



1ST FLOOR
585 sq.ft. (54.4 sq.m.) approx.



2ND FLOOR
300 sq.ft. (27.8 sq.m.) approx.



TOTAL FLOOR AREA : 1618 sq.ft. (150.3 sq.m.) approx.

Whilst every attempt has been made to ensure the accuracy of the floorplan contained here, measurements of doors, windows, rooms and any other items are approximate and no responsibility is taken for any error, omission or mis-statement. This plan is for illustrative purposes only and should be used as such by any prospective purchaser. The services, systems and appliances shown have not been tested and no guarantee as to their operability or efficiency can be given.

Made with Metropix ©2024

eXp World UK Ltd is a registered company at Level 37, 25 Canada Square, London, E14 5LQ.

Registered company number is 12016573. VAT Registration Number is 327 4120 29