



JASON KATES

exp[®] UK

@jason.kates@exp.uk.com

🌐 jasonkates.exp.uk.com

☎ 07824 532 168

Stevens Close, Hampton, TW12 3YW

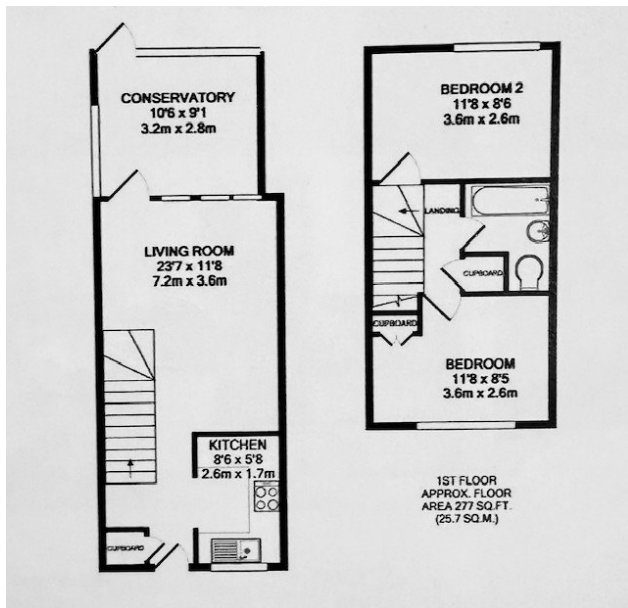
£425,000

🛏️ 2 🪑 1 🚗 1



REF-JHK0700.Pleased to offer to the market this 2 bedroom terraced cottage,Stevens Close is a quiet residential cut-de-sac in Hampton, conveniently positioned close to Hampton High Street (with its array of shops and cafes), Twickenham High Street and also Teddington, Kingston and Hounslow for more advanced shopping and entertainment.Many good and reputable schools are within easy reach, such as Hampton Boys and LEH Private Schools, Hampton Juniors, Carlisle Primary, Hampton High Secondary, Buckingham Primary state schools. Well known Hampton Common Grounds are only a short walk walk away.For commuters multiple bus routes are available nearby, Hampton Main Line Station short distance away (40 mins to London Waterloo). Motorists can benefit from easy access to A316, M3, M4 and M25.INTERNAL VIEWING HIGHLY RECOMMENDED.





- 2 Bedroom terraced property
- Through lounge
- Fitted kitchen
- Gas central heating
- Conservatory
- Double glazed
- close to amenities
- Cul-de-sac location
- Freehold
- Council tax band D, £2141 p/a



	Current	Potential
Very energy efficient - lower running costs		
(92 plus) A		
(81-91) B		91
(69-80) C	75	
(55-68) D		
(39-54) E		
(21-38) F		
(1-20) G		
Not energy efficient - higher running costs		