



STEVEN ROSENTHAL

exp[®] UK

@ steven.rosenthal@exp.uk.com

🌐 .stevenrosenthal.exp.uk.com

☎ 07884 131 817

Redstocks, 3 Worley Place, Seer Green, Buckinghamshire, HP9 2QF

A highly attractive and contemporary styled five bedroom detached house located in the picturesque Chilterns Village of Seer Green.

- Executive Five Bedroom Detached Family Home
- Two Spacious Reception Rooms and Study
- Bright Kitchen/Breakfast Room and Utility Room
- Welcoming Entrance Hall and Cloakroom
- Two Ensuites and Family Bathroom
- Beautiful Gardens, Driveway Parking and Double Garage
- Exclusive Gated and Private Development
- Situated in the Heart of Seer Green Village
- Close to Sought After Primary School
- Short Distance to Mainline Station

One of three executive family homes within a private gated development, Redstocks provides well-proportioned and immaculately presented accommodation throughout. Off the welcoming entrance hall are two generously sized reception rooms, a light and airy kitchen/breakfast room, and a study. A cloakroom and a utility room complete the ground floor layout. On the first floor, off the spacious landing, is a palatial principal bedroom suite featuring both a bath and shower, four further bedrooms, a Jack and Jill shower room, and a family bathroom. Externally, there are tastefully landscaped and neatly manicured front and rear gardens, a double garage, and a block-paved driveway with ample parking.





Seer Green is a pretty and much sought-after village situated in Buckinghamshire, renowned for its scenic beauty and tranquil rural charm. Fantastic state and private schooling options are available locally and for commuters, Seer Green and Jordans Mainline Station offers regular and direct services to London Marylebone, allowing for a swift and stress-free journey to the city.

Tenure: Freehold | EPC Rating: C | Council Tax Band: G



Approximate Gross Internal Area
 Ground Floor = 100.1 sq m / 1,077 sq ft
 First Floor = 94.1 sq m / 1,013 sq ft
 Garage = 30.2 sq m / 325 sq ft
 Total = 224.4 sq m / 2,415 sq ft

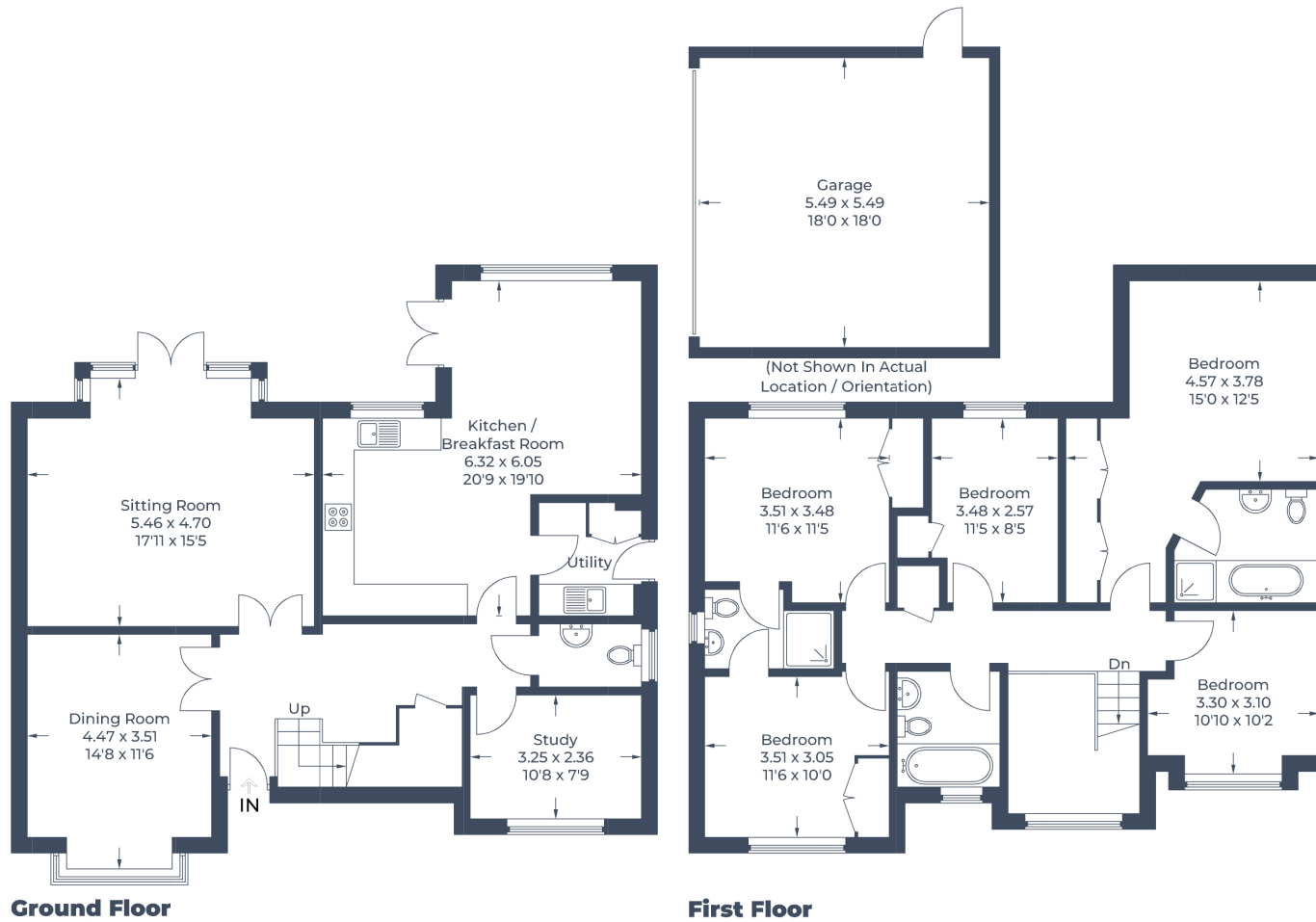


Illustration for identification purposes only,
 measurements are approximate, not to scale.
 © CJ Property Marketing Produced for EXP Steve Rosenthal