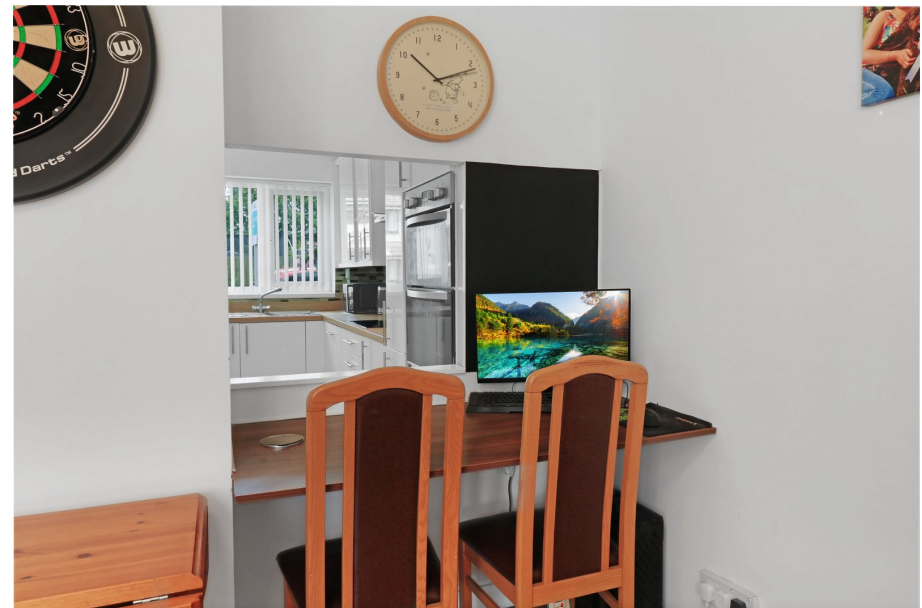




Windrush Drive, Chelmsford, CM1 7QR

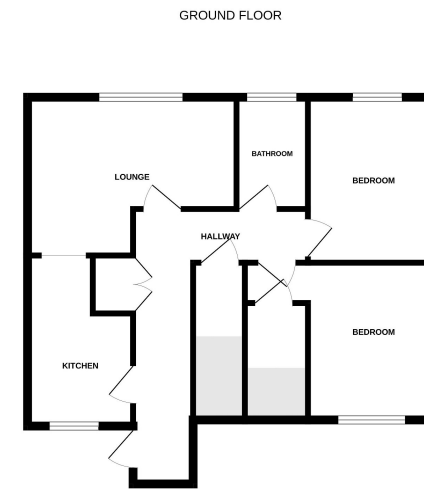
Offers Over £240,000

🛏️ 2 🪑 1 🚗 1



- 118 years remaining on the lease
- Ground Floor
- Garage
- Sought After Location
- Two Bedrooms
- Own Garden
- Low Charges
- Quote reference MB0473





We are not a professional firm and we do not have the necessary qualifications to provide a professional valuation. The information is provided for general information only and should not be relied upon for any financial or legal purposes. The information is provided on an 'as is' basis and we do not accept any liability for any loss or damage arising from its use.

Located within the sought after area of Springfield, is this spacious two bedroom ground floor maisonette, with its own garden and a garage in a block, having the advantage of a long lease and low charges. An internal viewing is highly recommended.

Quote reference MB0473

