



HOLLY WILSON

exp[®] UK

@ holly.wilson@exp.uk.com

🌐 hollywilson.exp.uk.com

☎ 07448 263 075

15 Azalea Avenue, Lindford

£599,950

4 2



Located in a cul-de-sac of just two detached properties, this four bedroom detached family home offers a balance of entertaining space and bedrooms with a wonderful secluded mature rear garden.

Offering two reception rooms, modern fitted kitchen/breakfast room, downstairs W/C, four double bedrooms (master with ensuite shower room), further family bathroom, integral garage (suitable for motorbikes, bikes and storage) and plenty of parking, this house really does offer it all. With room for further improvements and possible extensions, I would highly recommend a viewing to get the true feeling of space this home offers.

Azalea Avenue is located in Lindford, close to Bordon and Liphook and made up of residential homes with some local shops and pubs closeby.



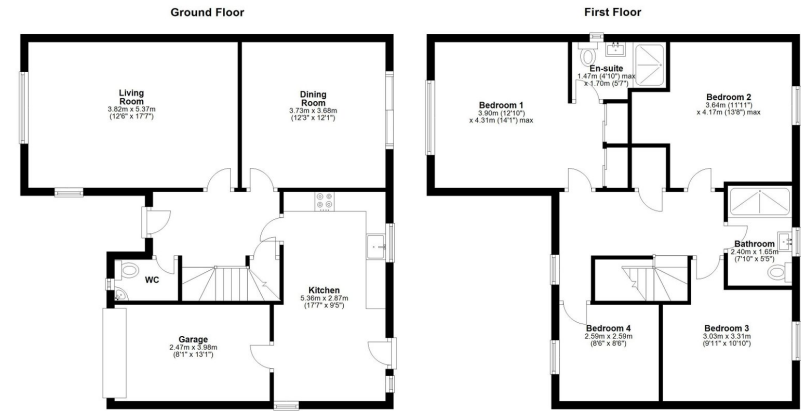


Floor Area
1431.32 sq. ft.

Tenure
Freehold

Service Charge
£0 per annum

Ground Rent
£0 per annum



While every effort is made to ensure the accuracy of this floor plan, measurements of floor, window, doors and other items are approximate. We take no responsibility for errors, omissions or misstatements on this plan. This is only for illustrative purposes and as such should only be used in this way. Any services, appliances or fixtures shown have not been tested. So no guarantee of their availability can be given. Copyright 2024 Your EPC Plan produced using Planity.

