

18 Robertson Drive, ME10 3GU

Guide Price £375,000 - £400,000

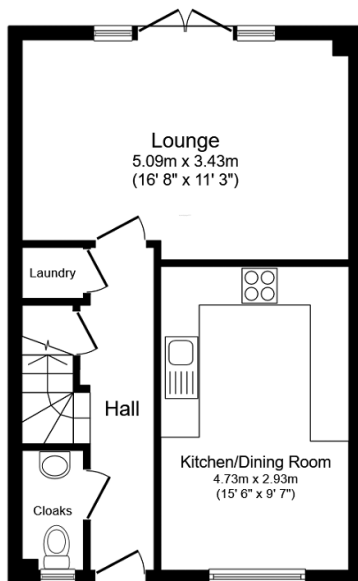
4 2 1



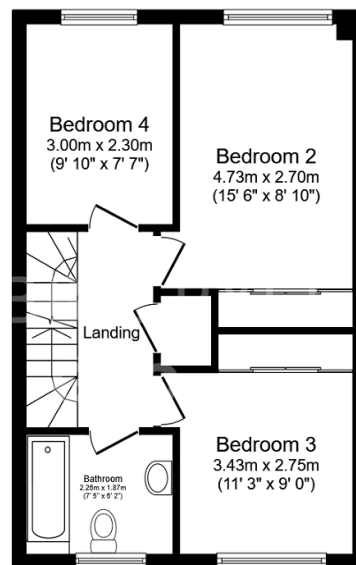
CALL TO BOOK YOUR VIEWING Guide £375,000 - £400,000. Are you struggling to tick all the boxes on your wish list? This home suits a variety of buyers and their circumstances. This home offers you the opportunity to move straight in from the moment you pick up your keys and enjoy your new home straight away. Presented neutrally throughout and every room in good condition means all you need to do is unpack and add your own personal touch. QUOTE REF AP0490

Key Features

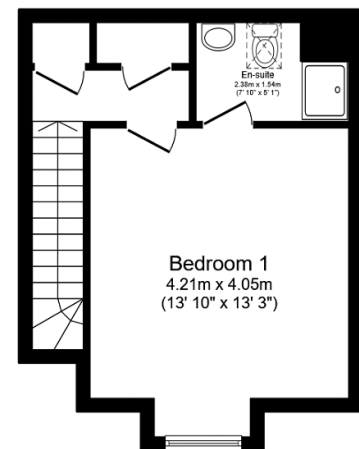
- Four bedroom modern townhouse
- Driveway for two cars
- Ensuite shower room, family bathroom and downstairs cloakroom
- Modern fitted kitchen with integrated appliances
- Spacious bedrooms
- Within walking distance to the Train Station
- Easy access to all shops and amenities
- NO CHAIN
- Tenure Freehold/Council Tax Band D
- QUOTE REF AP0490



Ground Floor
Floor area 42.0 m² (453 sq.ft.)



First Floor
Floor area 42.0 m² (452 sq.ft.)



Second Floor
Floor area 29.1 m² (313 sq.ft.)

TOTAL: 113.1 m² (1,218 sq.ft.)

This floor plan is for illustrative purposes only. It is not drawn to scale. Any measurements, floor areas (including any total floor area), openings and orientations are approximate. No details are guaranteed, they cannot be relied upon for any purpose and do not form any part of any agreement. No liability is taken for any error, omission or misstatement. A party must rely upon its own inspection(s). Powered by www.Propertybox.io