




AUSTIN SAMUELS POWERED BY exp <sup>TM</sup> UK

@ austin.samuels@exp.uk.com

 austinsamuels.co.uk

 020 3488 5959

# Southern Drive, Loughton IG10

£525,000

3 1 1

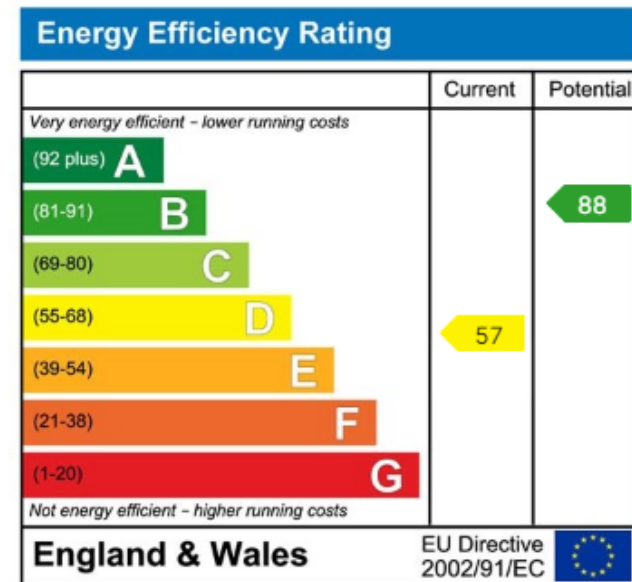
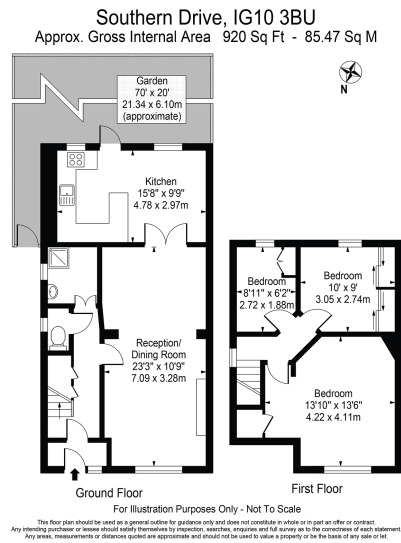


- Three Bedroom End of Terrace House
- Large Garden
- Close to Shops & Amenities
- Gas Central Heating
- Ground Floor Shower Room
- Close to Loughton Tube (Central Line)
- Close to Schools
- Fantastic Location
- Good Storage
- Ref: AS0090



A well-presented three-bedroom end of terrace house situated extremely close (half a mile) to Loughton tube station (Central Line-26 mins to Liverpool Street), Loughton High Street, local shops, parks, recreation grounds and great bus routes.

The property features a good size through lounge/living room, fully fitted kitchen/diner, separate ground floor shower room & toilet and three bedrooms on the first floor (two doubles, one single). The garden is a great size (70') with patio area and side gate for direct access. Although modernisation is needed this is a perfect family home of which the new owners can design it to their own tastes and is within catchment for good schools (see Key Facts for Buyers report).



eXp World UK Ltd is a registered company at Level 37, 25 Canada Square, London, E14 5LQ.

Registered company number is 12016573. VAT Registration Number is 327 4120 29