



3 Apsley Court

£235,000

DOMINIC MURPHY POWERED BY exp TM UK

@ dominic.murphy@exp.uk.com

dominicmurphy.exp.uk.com

01304 746 016



## 3 Apsley Court

**CHAIN FREE** - Tucked Away in a small private development is this three-bedroom property, that is best described as being a house, but technically it is a maisonette being that there is a home below it, with separate access via another part of the development. This unique and modern style property is located in a lovely position close to the town centre and The Royal Harbour with allocated parking space that will surely suit a variety of purchasers. **Please quote ref DM0223 when enquiring**

**Internally** - The property comprises front door opening to an entrance hall leading to a cloakroom/wc, there is a generous size kitchen/diner and a lounge located at the rear boasting some lovely views across Ramsgate, upstairs there are three bedrooms (2 doubles) the master enjoying an en suite as well as a family bathroom, a sunny aspect balcony is the icing on the cake for the second bedroom. The home is very low maintenance and would surely make a great lock up and leave holiday residence or simply a home to enjoy.

**Location** - Easy access to all local amenities and a fine selection of restaurants and bars literally on your doorstep, not to mention it's a short walk to the beach and a beautiful sandy beach too! Ramsgate main station is a short drive away offering fast rail links to London and beyond and with easy access to Europe, Marina Esplanade is only 1.3 miles to the train stations, 2 miles to Broadstairs and only 2.5 miles to Westwood Cross shopping centre



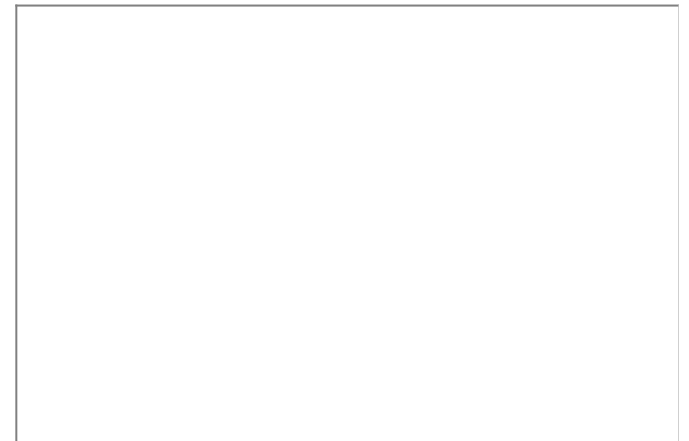




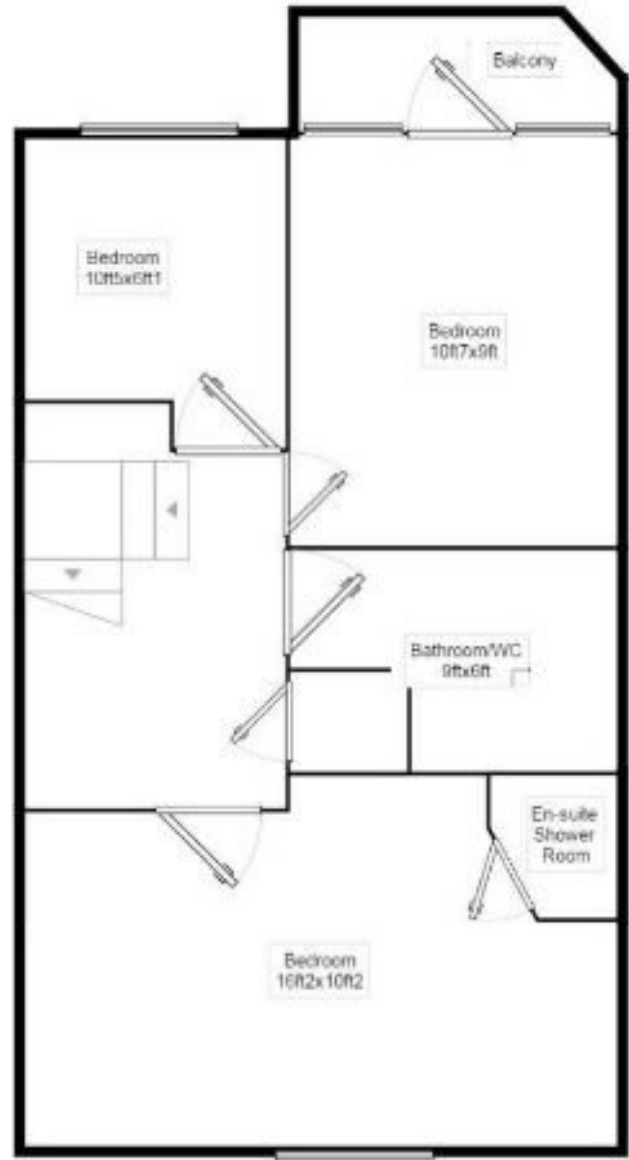








First Floor  
Floor Size: 43.9 m<sup>2</sup>, 472.5 ft<sup>2</sup>



Ground Floor  
Floor Size: 39.6 m<sup>2</sup>, 426.7 ft<sup>2</sup>

