



Westgate Bay Avenue, Westgate-on-sea, CT8 8SW

£850,000

DOMINIC MURPHY POWERED BY exp TM UK

@ dominic.murphy@exp.uk.com

dominicmurphy.exp.uk.com

01304 746 016

Westgate Bay Avenue, Westgate-on-sea, CT8 8SW

Hazeldene is a handsome period property retaining the original façade in the Victorian style, which has been painstakingly restored to preserve its heritage of magnificent proportions. The property has been extensively renovated throughout with fine interior design, which delivers an opulent residence oozing elegance and charm. The property unfolds just under an impressive 3,000 sq ft.

Benefitting from large sash windows and tall ceilings to most rooms, and stunning period features, the light and bright residence has a wealth of space for entertaining including a contemporary kitchen, office, formal sitting room, and lounge. With four spacious bedrooms. The desirable residence enjoys two bathrooms arranged across the four-story property and huge loft room with further possibilities.

Hazeldene offers a combination of a period and contemporary living experience and is a testament to unique design and innovation. Upon arrival, you'll be captivated by the façade that hints at the exceptional interiors within.

Internally - The open-concept kitchen dining room on the lower ground floor is a true masterpiece and features state-of-the-art appliances and a sleek, functional layout. A separate entrance, utility and WC completes the floor. The ground floor hosts two spacious reception rooms, an office and a separate WC. The first-floor half landing leads to the luxurious bathroom which is exquisitely appointed and there is a separate WC. The spacious landing leads to the large master bedroom with walk-in-wardrobe. A second-floor half landing boasts a further luxurious bathroom with separate WC and off the landing are the three generous size bedrooms.

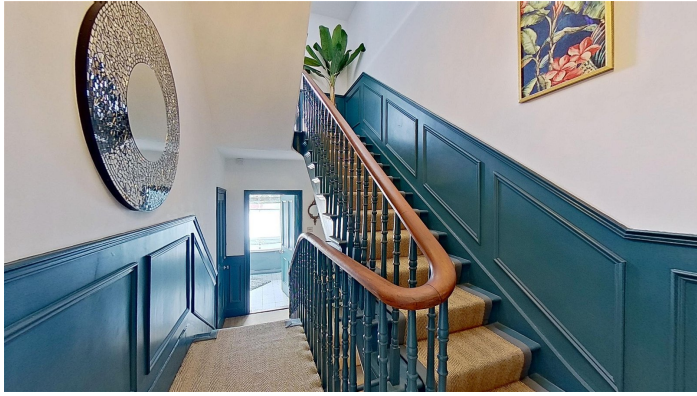
Gardens - There are two distinct paved seating areas, just off the kitchen with steps that lead to the ground level. They are beautifully landscaped in design and provides a comfortable outdoor living environment.















eXp World UK Ltd is a registered company at Level 37, 25 Canada Square, London, E14 5LQ.
Registered company number is 12016573. VAT Registration Number is 327 4120 29