

Tedder Avenue, Henlow, SG16 6HL

Offers Over £350,000

3 1 2

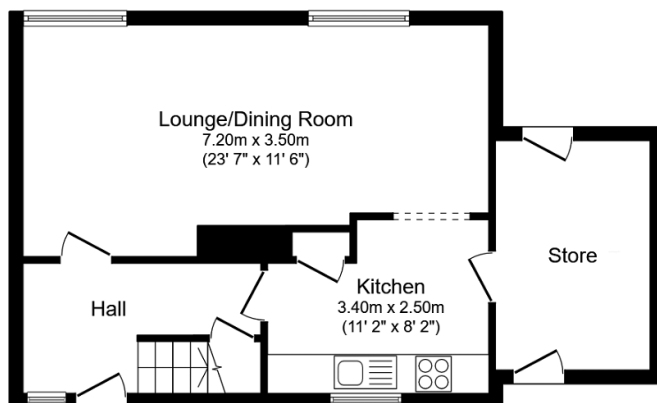


Delighted to present this spacious and beautifully finished 3 bedroom semi detached home located in Henlow, Bedfordshire. The property has been finished to a high, contemporary standard throughout, a perfect family home. Entering the property from the hallway you are welcomed into a large lounge / diner, benefiting from dual windows and a beautiful log burner giving it a warm and bright feel. The kitchen is a nice size, complete with integrated appliances with an additional large utility room. Upstairs there are three generous bedrooms, all complete with fantastic built in storage, family bathroom, separate W/C continuing with the contemporary finish of this family home.

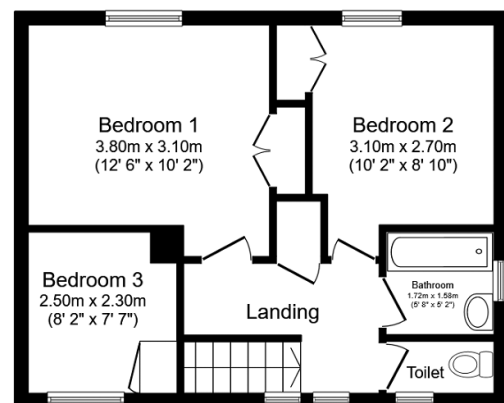
The property also benefits from a south facing garden and generous off-road parking with space for up to two cars.

Key Features

- Semi Detached
- Three Double Bedrooms
- Separate W/C
- Allocated parking
- Close by to local ammenties
- Beautifully presented
- Large utility room
- Log Burner
- South Facing Garden
- Ample Built In Storage



Ground Floor
Floor area 49.8 m² (536 sq.ft.)



First Floor
Floor area 41.0 m² (441 sq.ft.)

TOTAL: 90.8 m² (977 sq.ft.)

This floor plan is for illustrative purposes only. It is not drawn to scale. Any measurements, floor areas (including any total floor area), openings and orientations are approximate. No details are guaranteed, they cannot be relied upon for any purpose and do not form any part of any agreement. No liability is taken for any error, omission or misstatement. A party must rely upon its own inspection(s). Powered by www.Propertybox.io