

Fold Cottage Henlow SG16 6DD

Offers Over £550,000

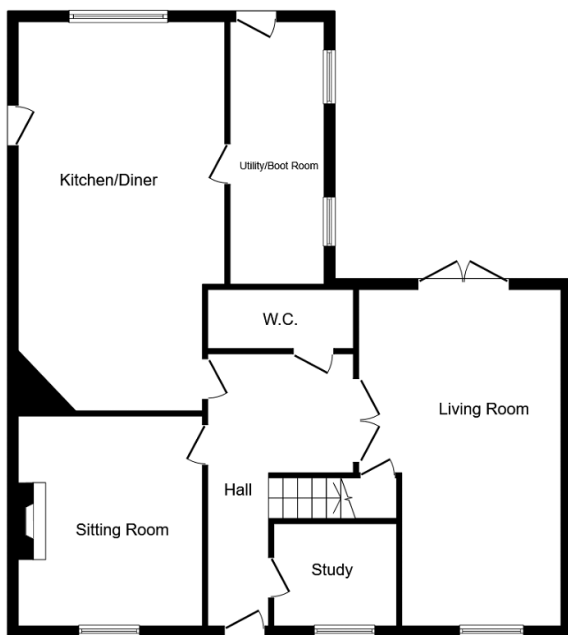
4 2 3



VIDEO ATTACHED. Delighted to present to the market this charming CHAINFREE four bedroom Victorian cottage situated in Henlow and within a short walking distance to Arlesey train station. Access to the property is through electric gates which open onto a courtyard area over looking the garden and fields with ample parking for 4 vehicles.

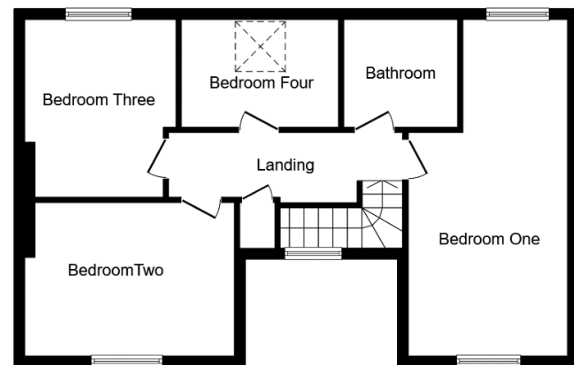
Key Features

- Four Double Bedroom
- Two Large Reception Rooms
- Downstairs W/C
- Large Outbuilding
- High Specification Kitchen
- Study
- Utility/ Boot Room
- Convenient access to A1(m) and Arlesey Train Station



Ground Floor

Floor area 102.3 m² (1,101 sq.ft.)



First Floor

Floor area 63.4 m² (682 sq.ft.)

TOTAL: 165.6 m² (1,783 sq.ft.)

This floor plan is for illustrative purposes only. It is not drawn to scale. Any measurements, floor areas (including any total floor area), openings and orientations are approximate. No details are guaranteed, they cannot be relied upon for any purpose and do not form any part of any agreement. No liability is taken for any error, omission or misstatement. A party must rely upon its own inspection(s). Powered by www.Propertybox.io