





# Loves Green, Highwood, Chelmsford, CM1 3QH

Offers Over £625,000

4 1 1



- Detached
- Country Views
- Four Bedrooms
- Driveway for Several Vehicles
- Garage
- No Onward Chain
- Quote reference MB0473

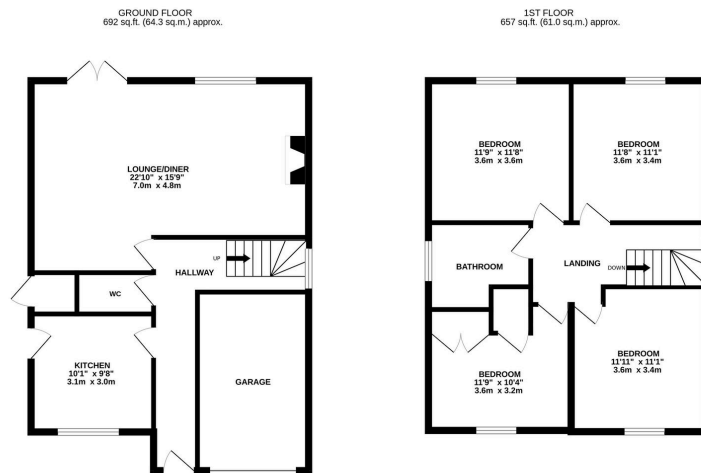




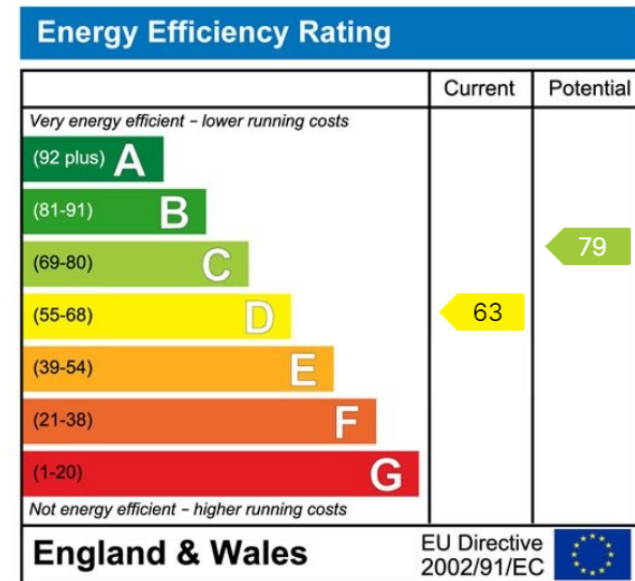


Located within the village of Loves Green is this spacious four bedroom detached family home, with undisturbed countryside views from the rear, an internal viewing is highly recommended.

Quote reference MB0473



**TOTAL FLOOR AREA:** 1349 sq.ft. (125.3 sq.m.) approx.  
While every attempt has been made to ensure the accuracy of the figures contained herein, measurements of rooms, windows, doors and any other parts are approximate and no responsibility is taken for any errors, omissions or mis-statements. This plan is for illustrative purposes only and should be used as such by any prospective purchaser. The services, systems and appliances shown have not been tested and no guarantee as to their operability or efficiency can be given.  
 Made with AutoCAD 2004



eXp World UK Ltd is a registered company at Corporation Service Company (UK) Limited, 5 Churchill Place, 10th Floor, London, United Kingdom, E14 5HU. Registered company number is 12016573. VAT Registration Number is 327 4120 29