




STEVEN ROSENTHAL

exp<sup>®</sup> UK

@steven.rosenthal@exp.uk.com

 .stevenrosenthal.exp.uk.com

 07884 131 817

# 1 Mill Close, Chesham, Buckinghamshire, HP5 1QL

Guide Price £669,950

3 1 1

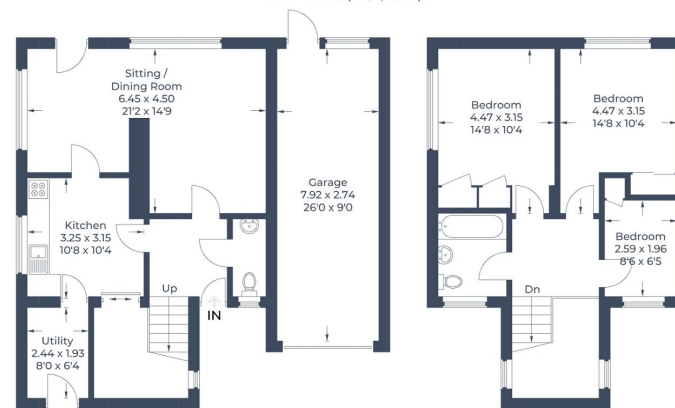


- Excellent Opportunity
- Spacious Living / Dining Room
- Entrance Hall and Cloakroom
- Mature Gardens
- Driveway Parking and Garage
- Charming Three Bedroom Detached Family Home
- Bright Kitchen and Utility Room
- Family Bathroom
- Large Corner Plot with Huge Scope to Extend S.T.P.P
- Chain Free





Approximate Gross Internal Area  
 Ground Floor = 55.6 sq m / 598 sq ft  
 First Floor = 49.7 sq m / 535 sq ft  
 Garage = 21.9 sq m / 236 sq ft  
 Total = 127.2 sq m / 1,369 sq ft



Ground Floor

First Floor

Illustration for identification purposes only,  
 measurements are approximate, not to scale.  
 © Property Marketing Produced for EXP Steve Rosenthal

An excellent opportunity to acquire a much loved three bedroom detached family home, situated on a generous corner plot on the picturesque south side of Chesham. Off the welcoming entrance hall, there is a large living / dining room with a door to the garden, a light filled kitchen and cloakroom. A useful utility area completes the ground floor. To the first floor are three bedrooms and a family bathroom, off the spacious landing. Externally there are the most charming and mature gardens, driveway parking and a garage. Please note the property is now in need of modernisation, however there is huge scope to remodel and or extend subject to the usual consents. A viewing comes highly recommended to appreciate all this house and plot have to offer. No onward chain.

