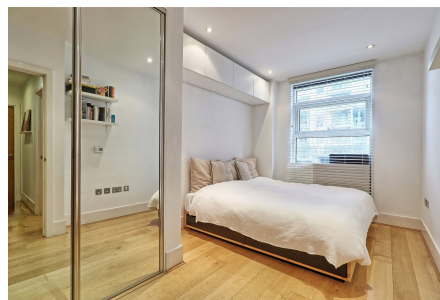


Battersea Reach, Juniper Drive, London, SW18

Guide Price £600,000

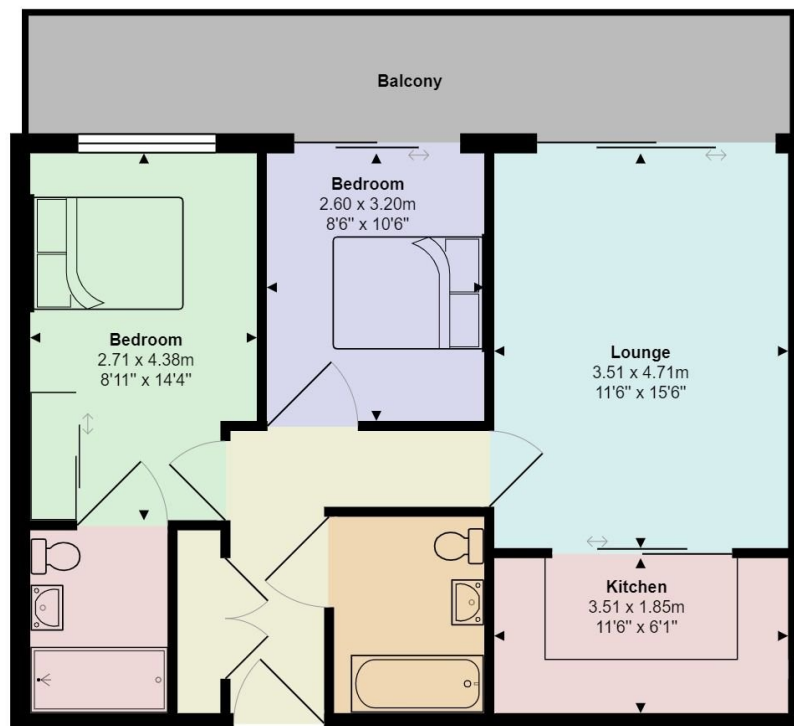
🛏 2 🚿 2 🚗 1



Escape the ordinary and discover this beautifully presented two-bedroom, two-bathroom apartment. Nestled within the prestigious Battersea Reach development, this haven offers captivating side-river views of the river Thames from its very own private balcony. Step inside and you'll be greeted by an abundance of natural light that floods the entire apartment. Imagine unwinding in your living room, a steaming cup of tea in hand, whilst your gaze drifts towards the shimmering river – a constant reminder of the city's vibrant heartbeat.

Key Features

- Two Double Bedrooms
- Modern Fitted Kitchen with new integrated appliances*
- Private Balcony with river views
- Concierge & Residents Gym
- Prestige Riverside Development/ 979 year lease remaining
- Open Plan Reception
- Two Bathrooms (One En-suite with double shower)
- Secure Underground Parking
- Nearby Rail / Tube / Bus / River Taxi
- *QUOTE RT0654 WHEN CALLING TO VIEW - CALLS ANSWERED 24/7*



Total Area: 60.6 m² ... 652 ft² (excluding balcony)

Measurements are approximate for illustrative purposes only and may have been taken from the widest area
 Floorplan Copyright The Estate Agents Photographer
www.theestateagentsphotographer.co.uk