



STEVEN ROSENTHAL

exp[®] UK

@steven.rosenthal@exp.uk.com

🌐.stevenrosenthal.exp.uk.com

📞 07884 131 817

7 The Maltings, Hunton Bridge, Kings Langley, WD4 8QL

Guide Price £789,950

🛏️ 4 🚗 2 🛋️ 2

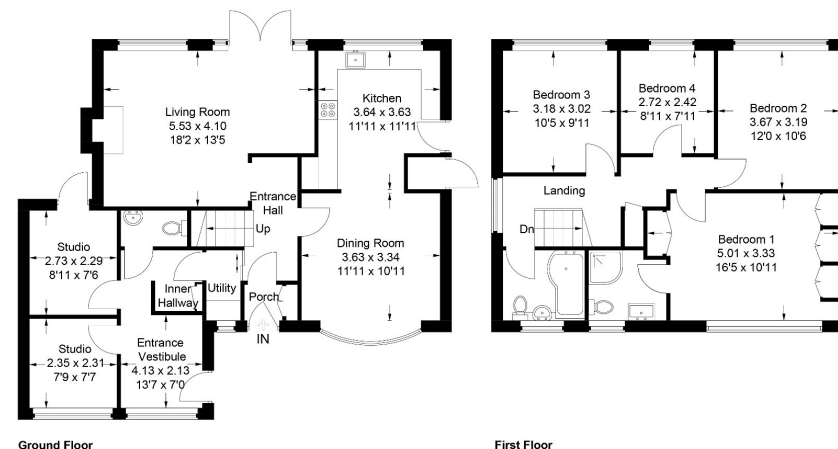


- Picturesque Location
- Well Appointed Kitchen / Dining Room and Large Living Room
- Studio and Home Office with Lobby
- Driveway Parking and Sunny West Facing Rear Garden
- Various Public Houses, a Convenience Store and Beautiful Canalside Walks Close By
- Spacious Four Bedroom Detached House
- En-suite Shower Room to Master and Family Bathroom
- Entrance Hall and Cloakroom
- Chain Free and Ready for Occupation
- Easy Access to Junction 19 of the M25 and Harry Potter Studios





Approximate Gross Internal Area = 140.1 sq m / 1508 sq ft



This plan is for layout guidance only. Not drawn to scale unless stated. Windows and door openings are approximate. Whilst every care is taken in the preparation of this plan, please check all dimensions, shapes and compass bearings before making any decisions reliant upon them.
© CJ Property Marketing Ltd Produced for Steven Rosenthal

An attractive and well proportioned four bedroom detached house situated in the charming hamlet of Hunton Bridge. The property features a bright and airy living room with French doors opening onto the garden and a generous sized Kitchen / Dining Room. There is also a studio, home office and lobby area which provides the perfect space for greeting / seeing clients if working from home. A cloakroom, entrance hall and utility area make up the remainder of the ground floor. Upstairs there is a spacious master bedroom with a modern en-suite shower room, three further bedrooms and a family bathroom. Externally to the front is a driveway providing off street parking and to the rear a delightful West facing, secluded garden. A viewing is strongly recommended as this is a fabulous opportunity to purchase a great family home. No onward chain.

