



STEVEN ROSENTHAL

exp[®] UK

@steven.rosenthal@exp.uk.com

🌐 .stevenrosenthal.exp.uk.com

📞 07884 131 817

7 The Maltings, Hunton Bridge, Kings Langley, WD4 8QL

Guide Price £825,000

🛏️ 4 🚿 2 🚗 2

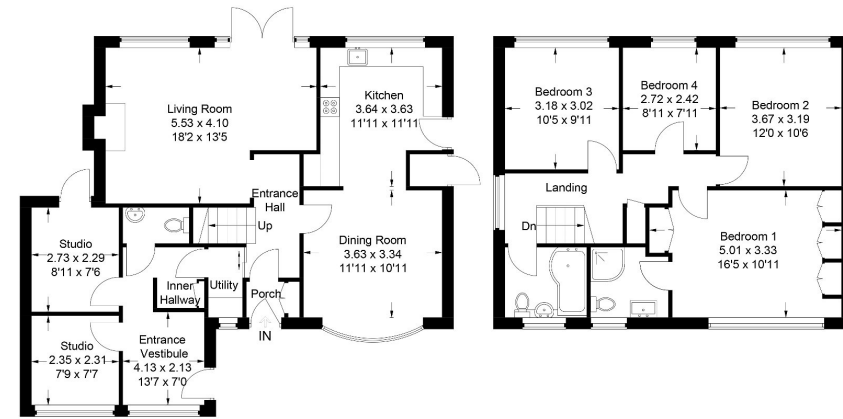


- **** Please quote SR0671 ****
- Well Appointed Kitchen / Dining Room and Large Living Room
- Studio and Home Office with Lobby
- Driveway Parking and Sunny West Facing Rear Garden
- Various Public Houses, a Convenience Store and Beautiful Canalside Walks Close By
- Spacious Four Bedroom Detached House
- En-suite Shower Room to Master and Family Bathroom
- Entrance Hall and Cloakroom
- Chain Free and Ready for Occupation
- Easy Access to Junction 19 of the M25 and Harry Potter Studios





Approximate Gross Internal Area = 140.1 sq m / 1508 sq ft



Ground Floor

First Floor

This plan is for layout guidance only. Not drawn to scale unless stated. Windows and door openings are approximate. Whilst every care is taken in the preparation of this plan, please check all dimensions, shapes and compass bearings before making any decisions reliant upon them.
© CJ Property Marketing Ltd Produced for Steven Rosenthal

**** Please quote SR0671 ****

A neatly presented four bedroom detached family home situated in a highly sought after and convenient location.

