

Holmside, Gillingham, ME7 4BQ

Guide Price £325,000

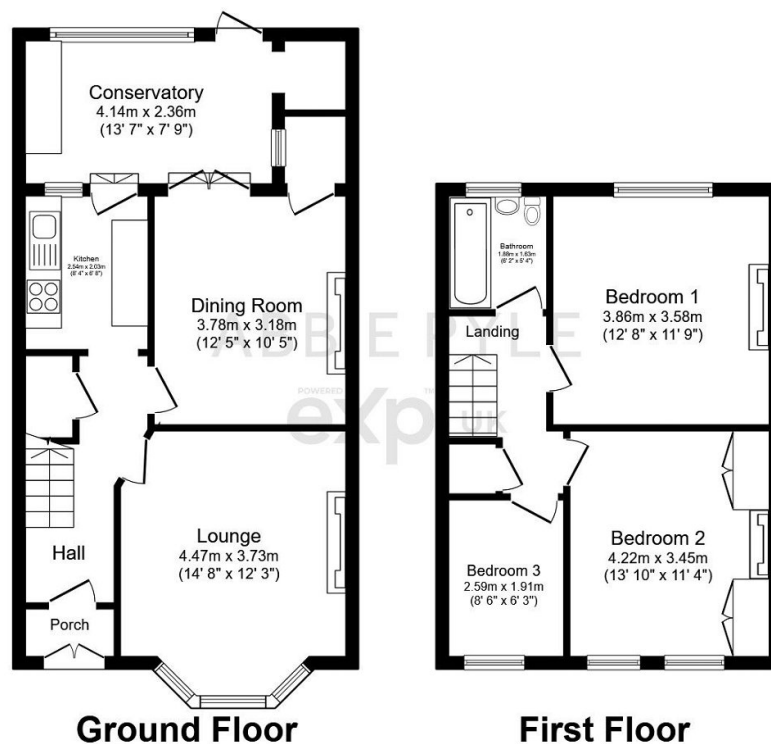
3 1 2



CALL TO BOOK YOUR VIEWING. Positioned in a pretty tree lined road in Gillingham amongst a friendly community sits this beautifully maintained 3 bedroom family home bursting with character and tasteful decoration throughout. Cosy up in the lounge in front of the feature fireplace or invite the family for a Sunday roast. With the added benefit of a separate dining room perfect to entertain and a modern kitchen to rustle up your favourite dishes. You also have a handy conservatory area ideal for a utility and perhaps home office? Upstairs you have 3 bedrooms and a modern bathroom. There is plenty of room in the garden for summer barbeques and additional space to the rear of the garden for a workshop, children's play area or perhaps a vegetable patch. QUOTE AP0490

Key Features

- Three bedroom family home
- Handy conservatory and utility area
- Separate Dining room
- Cosy Lounge with feature fireplace
- Beautiful condition throughout
- Modern bathroom and kitchen
- Good size garden with extra space for children's play area
- Easy access to A2/M2
- Tenure freehold/Council tax band C
- QUOTE REF AP0490



Total floor area 95.7 m² (1,030 sq.ft.) approx

This plan is for illustration purposes only and may not be representative of the property. Plan not to scale. Powered by PropertyBox