

Lyon Court, High Street, Rochester, Kent, ME1 1HX

Guide Price £220,000 - £230,000

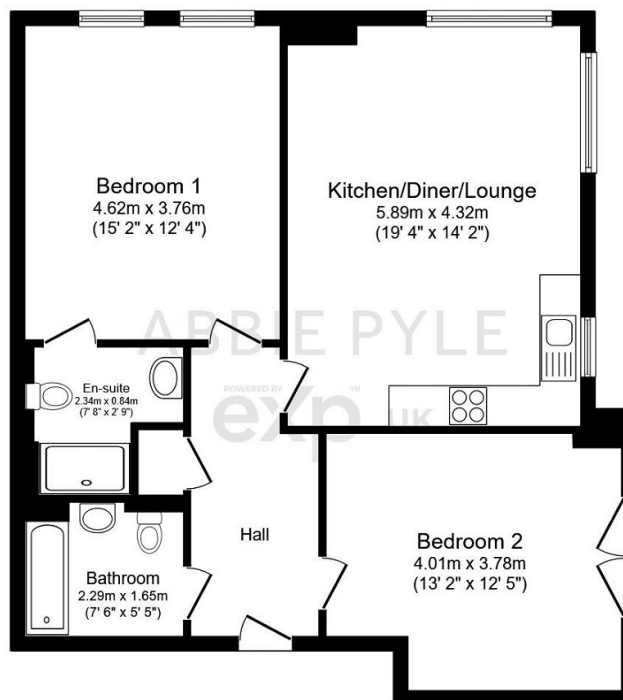
🛏 2 🍷 2 🚗 1



CALL TO BOOK YOUR VIEWING. Guide Price £220,000 - £230,000. This is the perfect location for London commuters! Positioned within close walking distance to the high speed Rochester train station and popular Historic Rochester high street. A modern apartment with lift access, two double bedrooms, two bathrooms as well as a gated entrance with an allocated parking space too. This apartment is certainly going to be popular. This property makes the ideal opportunity to get started on the property ladder or perhaps a buy to let investment. QUOTE AP0490

Key Features

- 2 Double bedroom third floor apartment
- Gated entrance with an allocated parking space
- Useful lift access
- Walking distance to high speed train station
- En Suite and a separate bathroom
- Spacious open plan kitchen, living dining area
- Floor to ceiling windows
- Modern decoration throughout
- Tenure - Leasehold long lease remaining/
Council Tax Band C
- QUOTE AP0490



Floor Plan

Total floor area 77.8 m² (838 sq.ft.) approx

This plan is for illustration purposes only and may not be representative of the property. Plan not to scale. Powered by PropertyBox