



3 Strand Street

£675,000

DOMINIC MURPHY POWERED BY exp TM UK

@ dominic.murphy@exp.uk.com

dominicmurphy.exp.uk.com

01304 746 016

3 Strand Street

A wonderful medieval townhouse, originally owned by a wealthy merchant, with generous and versatile accommodation spread over three floors and situated in the heart of the historic Cinque Port of Sandwich. The home dates back to circa 1470 and retains some lovely period features, including a wealth of exposed beams and some lovely fireplaces.

The property in more recent years has been sympathetically refurbished to create a blend of modern and heritage style, offering great entertaining and family space throughout.

The front door opens into a welcoming reception hall, with storage cupboards, exposed beams, and a chequered tiled floor, this flows the whole length of the hall with its ancient flint wall and bespoke fitted seating along its base. There are doors into: The quality fitted kitchen and breakfast room at the front with contemporary shaker style units, integrated appliances and a central island and breakfast bar. The modern kitchen is a great family central hub and showcases exposed brickwork of the chimney breast.

To the rear of the property is a generous size, versatile sitting/dining room, which looks out over the courtyard garden. This room has some wonderful period features, including an inglenook fireplace with Lancastrian Rose emblems set above it.

On the first floor, there is a large double aspect lounge room with lovely, exposed beams and an exposed brick fireplace with a flagstone hearth. Also on this floor, just off the landing, is a double bedroom and a well-appointed four-piece family bathroom. This has been fitted with a traditionally styled white suite, including a bath and separate shower cubical.

On the second floor, there is a gallery style landing with study area, a real highlight to the house, which is a light and airy space with the help from the medieval leaded light side windows, doors lead into the large double aspect bedroom to the front with some river views.

The rear master bedroom again is a very generous size, and the beamed and part vaulted ceiling gives the beautiful room the added feeling of space. On a particular note: there is a large roof void which could, subject to the necessary consents be converted, creating an

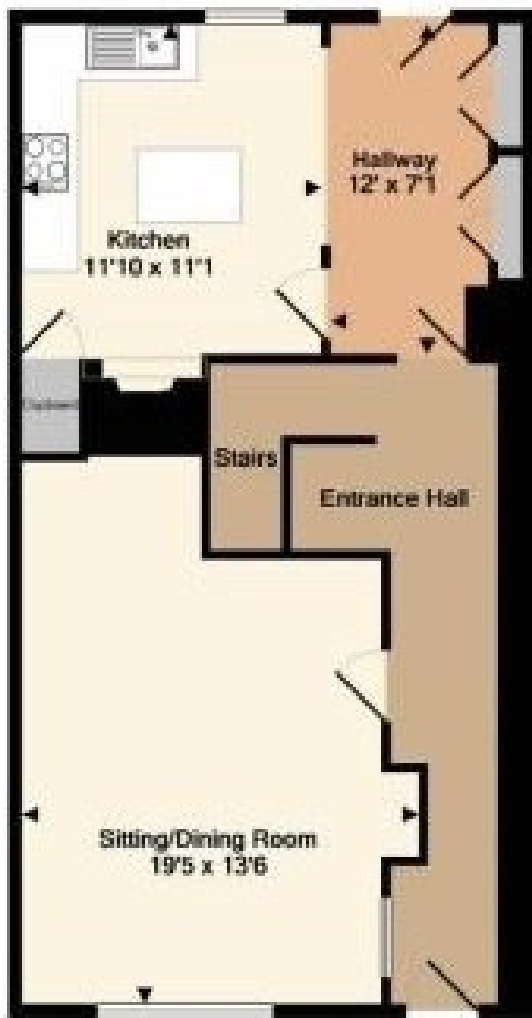




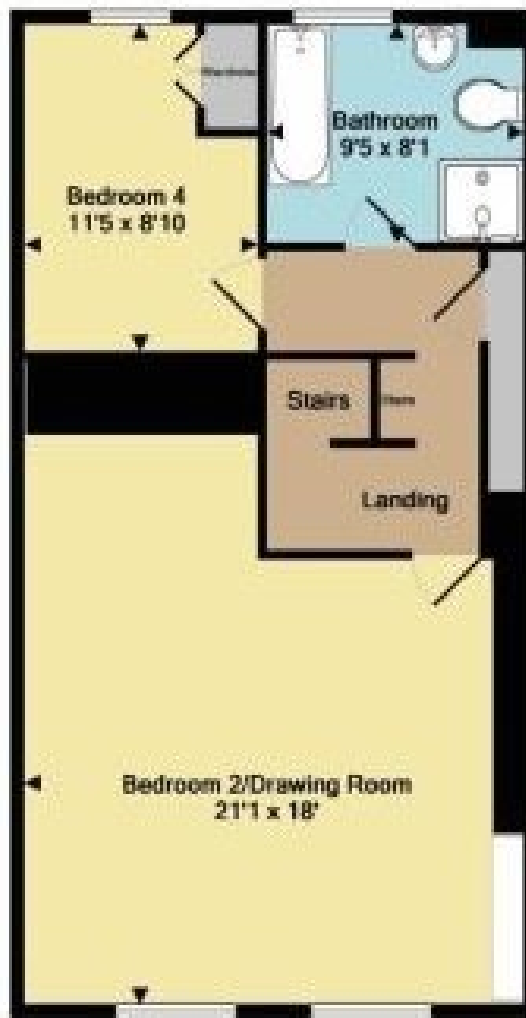




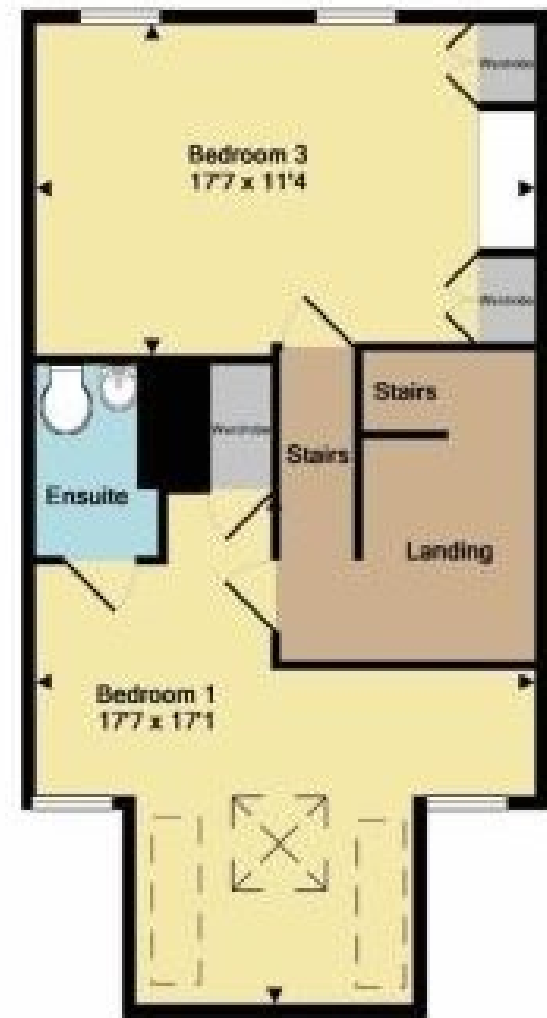




Ground Floor



1st Floor



2nd Floor

Total Approx. Floor Area 1850 Sq.Ft. (171.9 Sq.M.)
 Measurements are approximate. Not to scale. Illustrative purposes only.
 Made with Metropix ©2018