




STEVEN ROSENTHAL

exp[®] UK

@steven.rosenthal@exp.uk.com

 .stevenrosenthal.exp.uk.com

 07884 131 817

88 Valley Road, Rickmansworth, WD3 4BJ

Guide Price £3,500,000

🛏️ 5 🚿 6 🚗 4



- New Build Smart Home
- Over 7000 Sq Ft of Flexible Accommodation
- Palatial Open Plan Living / Dining Areas
- Annex / Games Room with Large Terrace
- Beautifully Landscaped Gardens Perfect for Al-Fresco Dining and Entertaining
- Luxurious Five Bedroom Detached House
- Bespoke Kitchen - Bora, Miele and LG Signature Appliances
- Cinema, Gym, Guest Suite
- Gated Driveway and Heated Double Garage
- 12 Year New Home Building Warranty





Approximate Gross Internal Area
 Lower Ground Floor = 234.0 sq m / 2,519 sq ft
 Upper Ground Floor = 174.6 sq m / 1,880 sq ft
 First Floor = 189.6 sq m / 2,041 sq ft
 Annex / Games Room = 61.5 sq m / 662 sq ft
 Total = 659.7 sq m / 7,102 sq ft

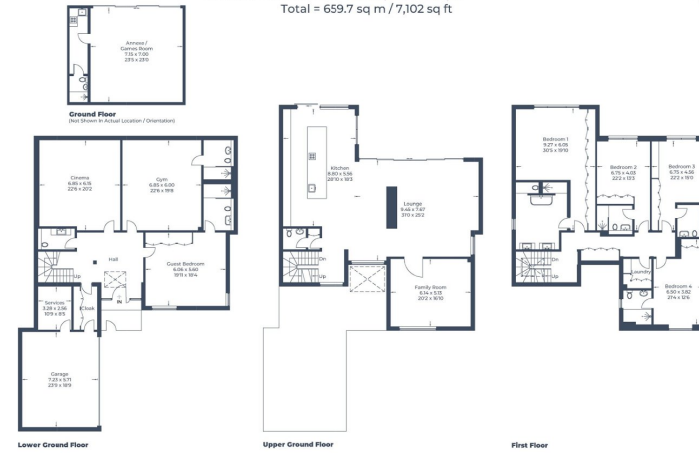


Illustration for identification purposes only, measurements are approximate, not to scale.
 © CJ Property Marketing Produced for Steve Rosenthal

Discover the epitome of ultra-modern living in this architectural marvel, where sleek lines, innovative design, and cutting-edge technology converge to create a residence that is truly ahead of its time.

