



STEVEN ROSENTHAL

exp[®] UK

@steven.rosenthal@exp.uk.com

🌐.stevenrosenthal.exp.uk.com

☎️ 07884 131 817

47 Rose Drive, Chesham, Buckinghamshire, HP5 1RR

Guide Price £475,000

3 1 2



- ** Please quote SR0671 **
- Large Open Plan Living / Dining Room with Study Area
- Spacious Entrance Hall with Storage
- Driveway Parking and Garage
- Country Walks on the Doorstep
- Attractive Three Bedroom Semi Detached Bungalow
- Family Room and Fitted Kitchen
- Charming Tastefully Landscaped Rear Garden
- Peaceful Location Backing onto Farmlands and Fields
- Just Over One Mile (Walking Distance) to Chesham Met. Line Station





Approximate Gross Internal Area
 Ground Floor = 85.9 sq m / 925 sq ft
 First Floor = 24.4 sq m / 263 sq ft
 Garage = 15.8 sq m / 170 sq ft
 Total = 126.1 sq m / 1,358 sq ft

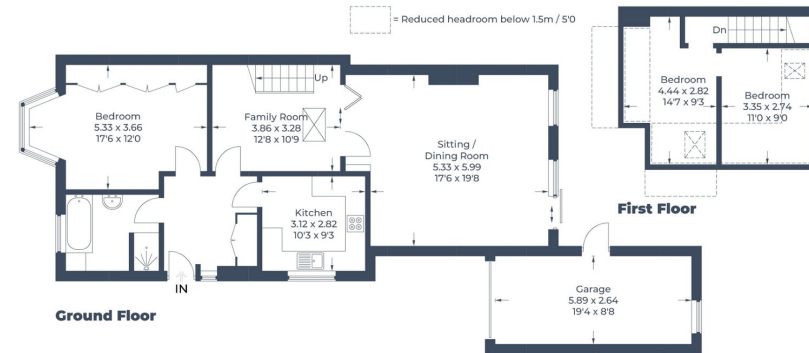


Illustration for identification purposes only.
 measurements are approximate, not to scale.
 © Property Marketing Produced for EXP - Steve Rosenthal

**** Please quote SR0671 ****

A trendy and deceptively spacious three bedroom semi detached bungalow situated in a peaceful location backing onto farmland and fields.

