

Quickley Rise, Chorleywood

Guide Price £1,300,000

🛏️ 6 🚿 3 🚗 4



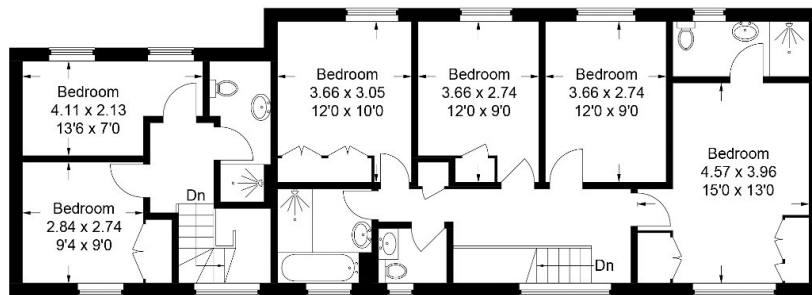
A fabulous spacious six bedroom detached family home with annexe, located within the village of Chorleywood.

*** PLEASE QUOTE REF KW 0404 ***

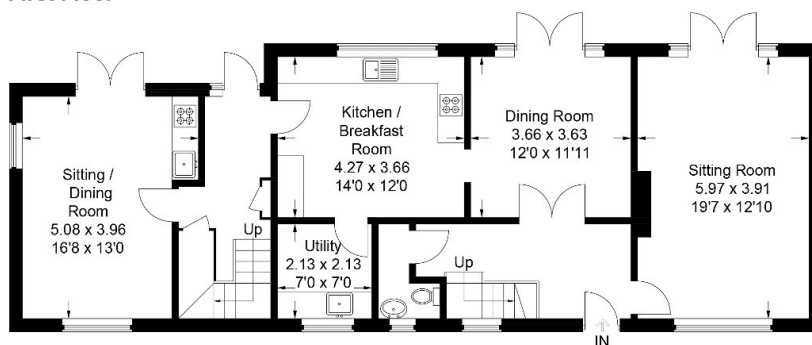
Key Features

- Six bedrooms
- Well presented
- Annexe
- Cul de sac location
- Beautiful rear garden with decking area.
- Driveway parking
- Utility room
- Catchment to excellent primary school
- Three bathrooms
- Views across Chorleywood.

Approximate Gross Internal Area
 Ground Floor = 102.3 sq m / 1,101 sq ft
 First Floor = 101.3 sq m / 1,090 sq ft
 Total = 203.6 sq m / 2,191 sq ft



First Floor



Ground Floor

This plan is for layout guidance only. Not drawn to scale unless stated. Windows and door openings are approximate. Whilst every care is taken in the preparation of this plan, please check all dimensions, shapes and compass bearings before making any decisions reliant upon them.

© CJ Property Marketing Ltd Produced for Kate Woodward