

Green Lane, Hitchin, SG4 0BU

Offers Over £1,150,000

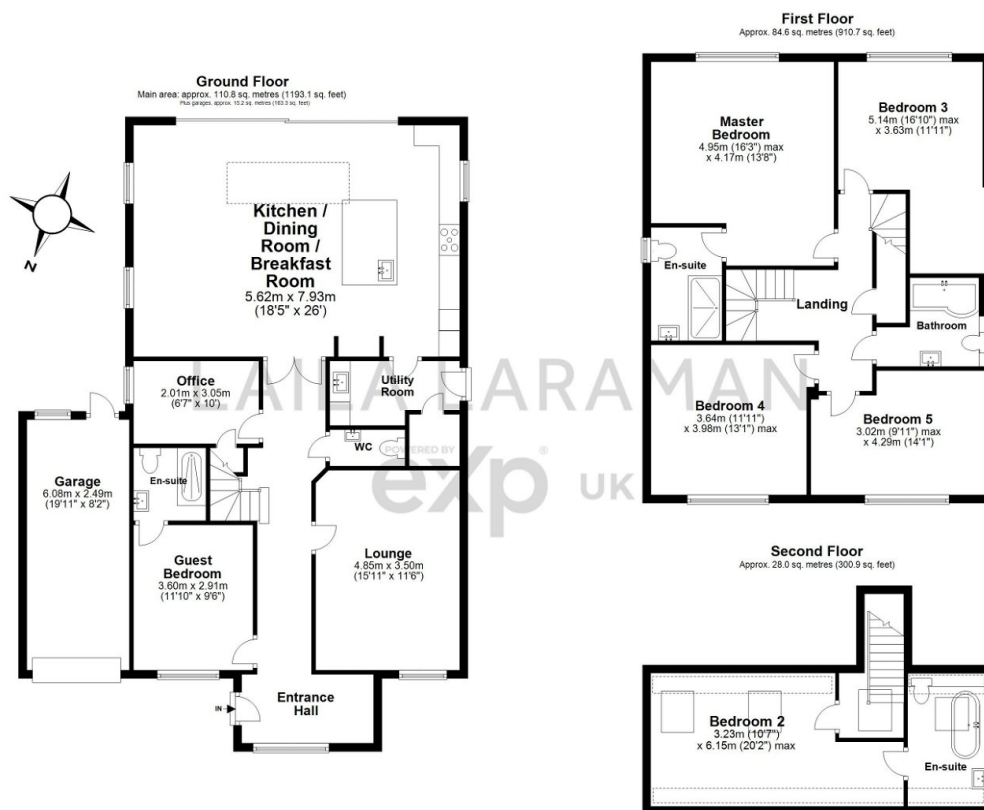
5 4 3



Laila Laraman is proud to present this impressive property of grand proportions, with superior specifications and light-filled accommodation, joined by a substantial south-facing garden, a multi-car driveway and a garage, all within swift access of both Hitchin town centre and mainline station.

Key Features

- Fully renovated 2,400sqft detached family residence
- Kitchen with waterfall island and integrated appliances
- Five bedrooms, plus a ground-floor guest suite
- Multi-car driveway, garage, EV charger
- Between Walsworth Common and Purwell Meadows
- Spectacular open-plan living with indoor-outdoor feel
- Separate lounge and home office
- Substantial and well-screened south-facing garden
- A brisk 10 minute walk to the station
- Choice of schools and independent education nearby



Main area: Approx. 223.4 sq. metres (2404.6 sq. feet)

Plus garage: approx. 10.2 sq. metres (107.3 sq. feet)

Every attempt has been made to ensure the accuracy of this floorplan, however no responsibility is taken for any errors, omissions or mis-measurements. This plan is for illustrative purposes and is a guideline only, and should be used as such by any prospective purchaser.

Copyright 2023 - RobSpicerPhoto.com

Plan produced using PlanUp