



JAMES VOYSEY POWERED BY exp TM UK

@ james.voysey@exp.uk.com

jamesvoysey.exp.uk.com

01227 678068



# Rutland Gardens, Birchington

£318,500

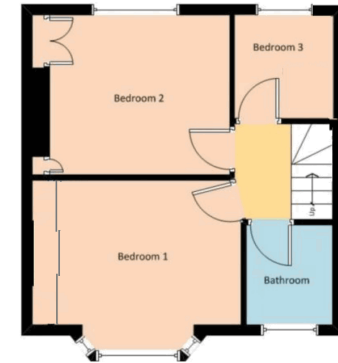
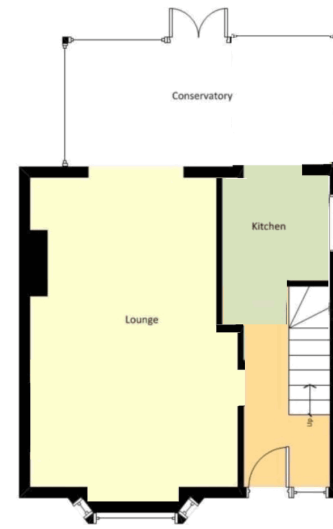
3 1 1





- Chain Free & Vacant Possession
- Bright & Airy Rooms
- Low Maintenance Rear Garden
- Conservatory
- Please Quote Ref JV0094
- 3 Bedroom Semi Detached House
- Off Street Parking
- Workshop & Shed
- Popular Residential Location





CHAIN FREE! Semi detached house in a popular residential location in the sea side village of Birchington-On-Sea. Spacious lounge diner, conservatory and low maintenance rear garden with outbuildings. Approached by a gated block paved driveway providing off street parking is this spacious three bedroom, semi detached family home. On the ground floor the property has a great sized lounge diner, conservatory and kitchen. Upstairs on the first floor are three bedrooms, two of which having built in wardrobes and a shower room.

Score	Energy rating	Current	Potential
92+	A		
81-91	B		83 B
69-80	C		
55-68	D	60 D	
39-54	E		
21-38	F		
1-20	G		