

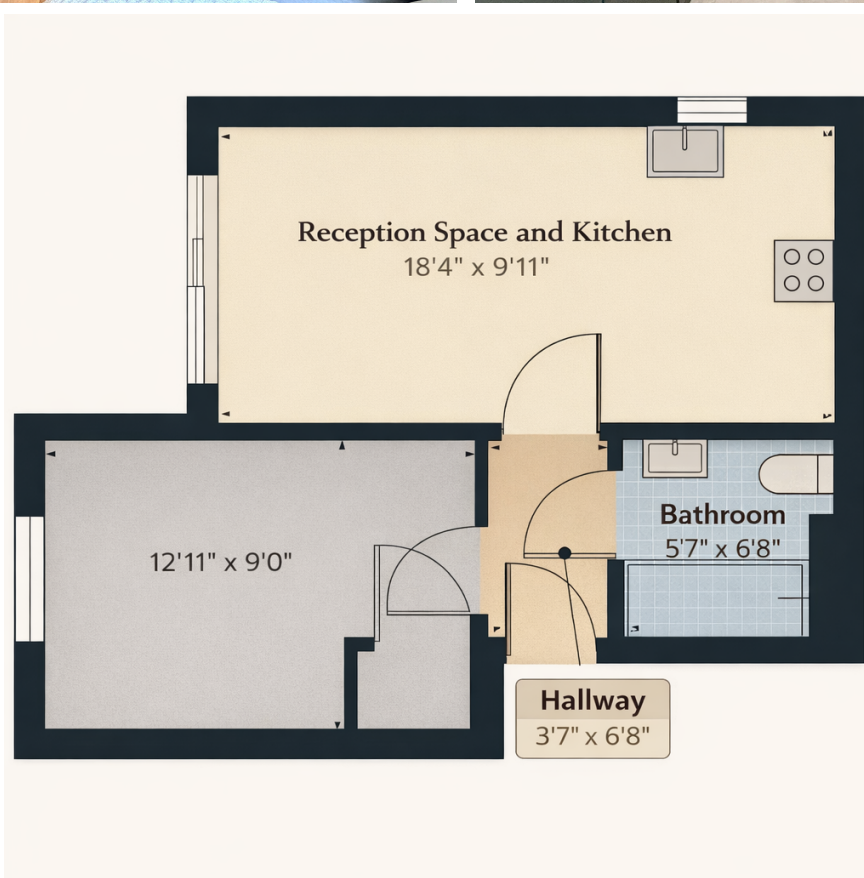
**11 Christy Close,**

Offers Over £115,000

1 1 1



- Ideal First Time Buyer Property or Investment
- Allocated Parking space
- Excellent Local Amenities
- Close to Hyde Bus Station
- Peaceful Setting
- Excellent Local Amenities
- 1 Double Bedroom
- Within Minutes From The M67 Motorway
- Close To Hyde Central Train Station
- Please Quote REF: SB1444



Welcome to Christy Close, Hyde. A peaceful second-floor one-bedroom apartment with a private decked balcony, allocated parking, and a wonderfully green, tree-lined outlook, all within easy walking distance of shops, amenities, and excellent transport links into Manchester city centre.