



GLEN HEATON

exp[®] UK

@glen.heaton@exp.uk.com

glenheaton.exp.uk.com

01617 062054

13 Polesworth Close, Gorton

Offers Over £180,000

🛏 2 🚿 1 🛋 2

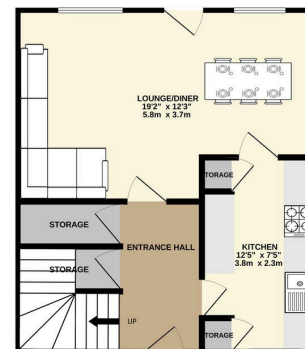


- Please Quote Ref GH702
- Quiet Cul De Sac Location
- No Onward Chain
- Two Double Bedrooms
- Close To Manchester City Centre
- Excellent Transport Links

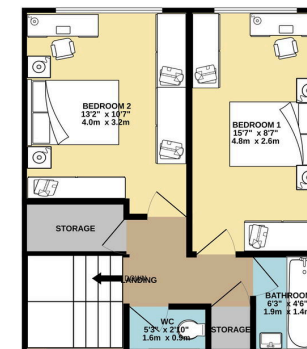




GROUND FLOOR
419 sq.ft. (38.9 sq.m.) approx.



1ST FLOOR
419 sq.ft. (38.9 sq.m.) approx.



TOTAL FLOOR AREA : 837 sq.ft. (77.8 sq.m.) approx.

Whilst every attempt has been made to ensure the accuracy of the floorplan contained here, measurements of doors, windows, rooms and any other items are approximate and no responsibility is taken for any error, omission or misstatement. This plan is for illustrative purposes only and should be used as such by any prospective purchaser. The services, systems and appliances shown have not been tested and no guarantee as to their operability or efficiency can be given.
Made with Homestyler ©2020

Open Day Saturday 6th September, Call The Office To Book Your Time Slot.

Welcome To Polesworth Close, Gorton, A Spacious Two Double Bedroom Mid Terrace Home With No Onwards Chain.