



SIMON WOODHOUSE **exp** UK

@ [simon.woodhouse@exp.uk.com](mailto:simon.woodhouse@exp.uk.com)

🌐 [simonwoodhouse.exp.uk.com](http://simonwoodhouse.exp.uk.com)

☎ 07423 670 803

## Samuel Armstrong Way, Crewe, CW1 4SJ

Fixed Price £65,000

🛏 2 🍳 2 🛋 1

- First floor apartment in a modern 2022 development
- Light-filled open-plan lounge/kitchen with Juliet balcony
- Separate family bathroom with shower over bath
- One allocated, numbered parking space
- Quiet block of only 9 flats – all owner-occupied
- Two bedrooms (double + spacious single)
- Master bedroom with en-suite shower room
- Spacious hallway with large storage cupboard & intercom system
- Gas central heating with serviced boiler
- Excellent access to Crewe station, Leighton Hospital & Bentley Motors

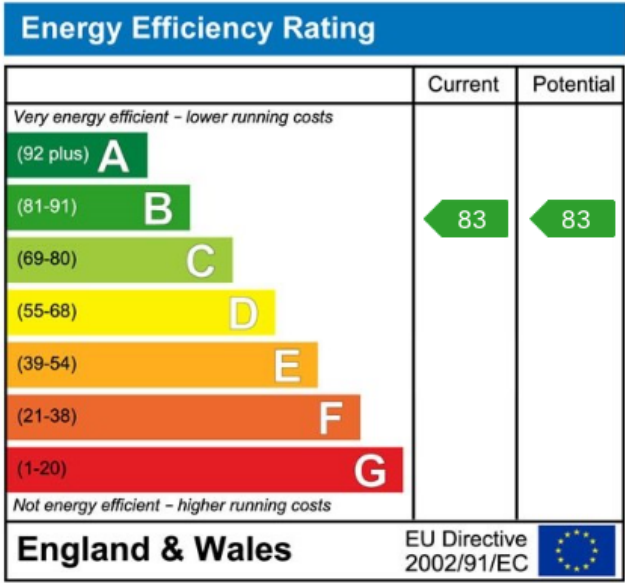
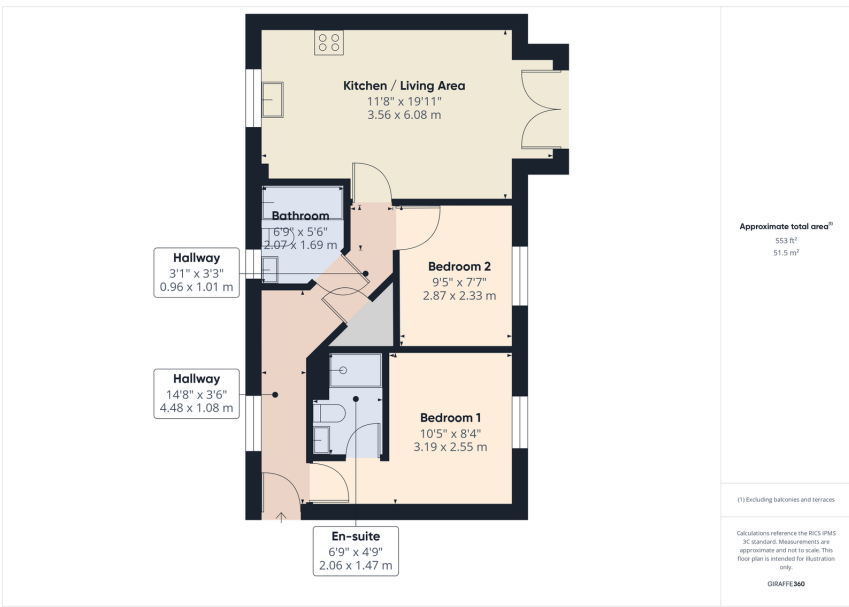


Modern 2-Bed Apartment – Built in 2022 by Taylor Wimpey

50% shared ownership







eXp World UK Ltd is a registered company at Corporation Service Company (UK) Limited, 5 Churchill Place, 10th Floor, London, United Kingdom, E14 5HU. Registered company number is 12016573. VAT Registration Number is 327 4120 29